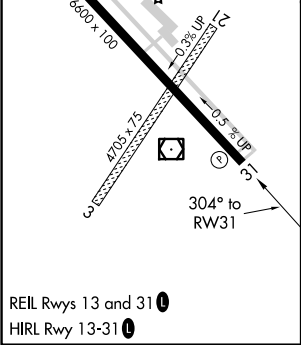
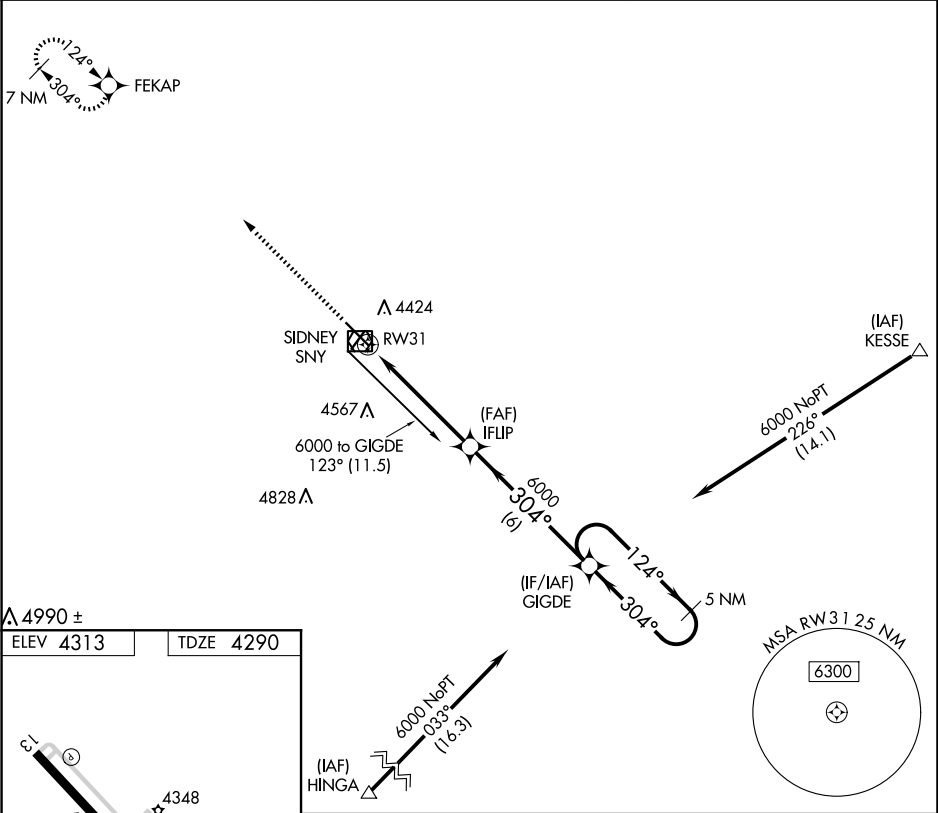


APP CRS	Rwy Idg	6600
304°	TDZE	4290
	Apt Elev	4313

RNAV (GPS) RWY 31  
SIDNEY MUNI/LLOYD W CARR FLD (SNY)

<p><b>⚠</b></p> <p>DME/DME RNP-0.3 NA. When local altimeter setting not received, use Kimball altimeter setting: increase all MDAs 160 feet and visibility Cats C and D ½ SM.</p>	<p>MISSED APPROACH: Climb to 6500 direct FEKAP and hold.</p>
---	--

ASOS 125.775	DENVER CENTER 118.475 225.4	UNICOM 122.8 (CTAF) <b>0</b>
-----------------	--------------------------------	---------------------------------



6500	FEKAP	IFLP	GIGDE	5 NM Holding Pattern
1.3 NM to RWY 31	3.00° TCH 47°	6000	304°	124° 6000
1.3 NM	3.9 NM	6 NM		
CATEGORY	A	B	C	D
LNAV MDA	4740-1	450 (500-1)	4740-1¼ 450 (500-1¼)	4740-1½ 450 (500-1½)
CIRCLING	4760-1 447 (500-1)	4780-1 467 (500-1)	4920-1¾ 607 (700-1¾)	4960-2 647 (700-2)

NC-2, 10 JUL 2025 to 07 AUG 2025

NC-2, 10 JUL 2025 to 07 AUG 2025