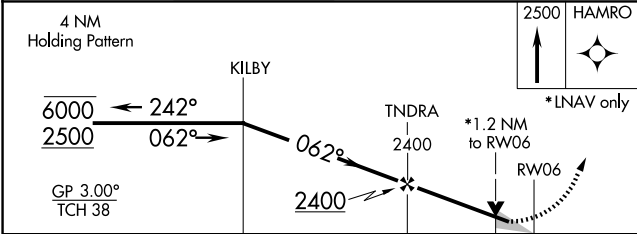
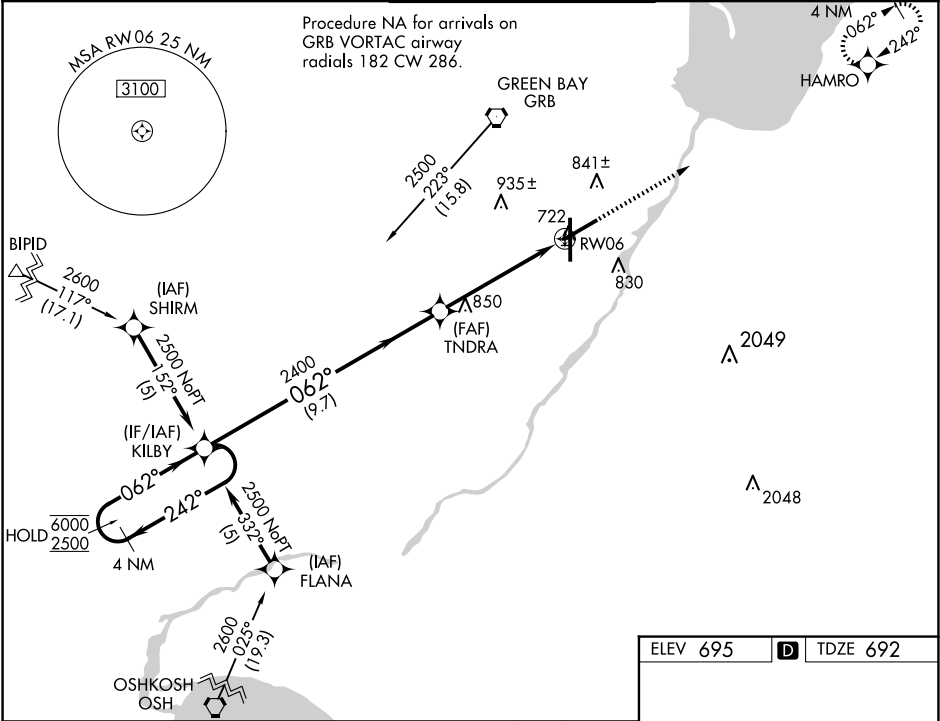


WAAS CH 63015 W06A	APP CRS 062°	Rwy Idg 7699 TDZE 692 Apt Elev 695
--	------------------------	---

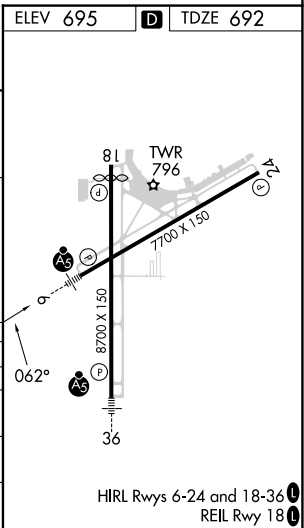
RNAV (GPS) RWY 6

GREEN BAY/AUSTIN STRAUBEL INTL (GRB)

RNP APCH.		MALSR	MISSED APPROACH: Climb to 2500 direct HAMRO and hold.	
▼ For uncompensated Baro-VNAV systems, LNAV/VNAV NA below -16°C or above 54°C. For inop ALS, increase LNAV/VNAV all Cats visibility to RVR 4500, and LNAV Cats C and D visibility to RVR 6000. **RVR 1800 authorized with use of FD or AP or HUD to DA		ASR		
ATIS 124.1	GREEN BAY APP CON★ 119.4 338.2	GREEN BAY TOWER ★ 118.7 (CTAF) 0 257.8	GND CON 121.9	CLNC DEL 121.75



CATEGORY	A	B	C	D
LPV DA**		892/24	200 (200-½)	
LNAV/VNAV DA		1000/24 308 (400-½)		1000/40 308 (400-¾)
LNAV MDA	1100/24 408 (500-½)		1100/40 408 (500-¾)	
CIRCLING	1200-1 505 (600-1)		1300-1¾ 605 (700-1½)	1300-2 605 (700-2)



EC-3, 10 JUL 2025 to 07 AUG 2025

EC-3, 10 JUL 2025 to 07 AUG 2025