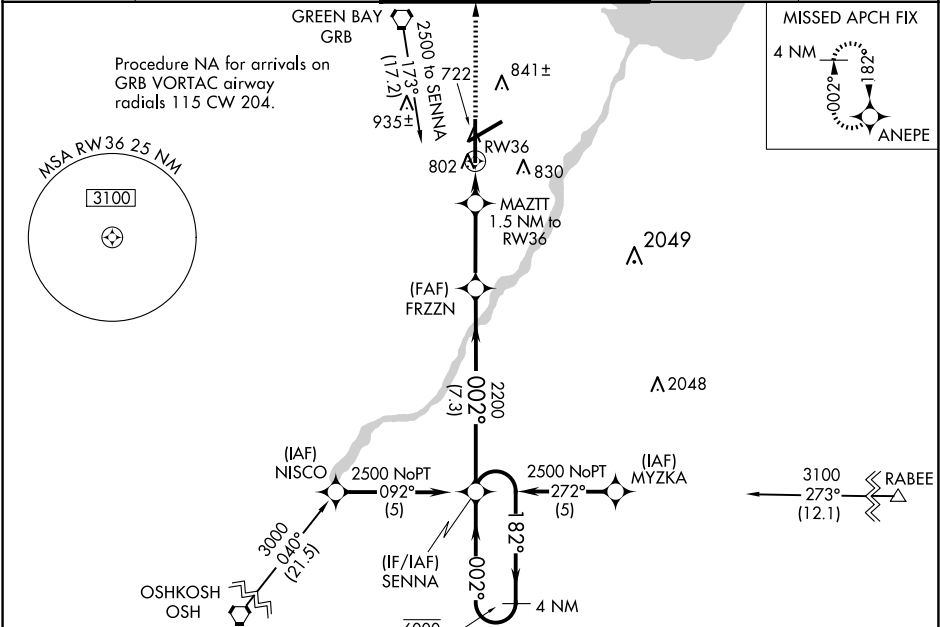


WAAS CH <b>42902</b> <b>W36A</b>	APP CRS <b>002°</b>	Rwy Idg TDZE Apt Elev	<b>8201</b> <b>684</b> <b>695</b>
--	------------------------	-----------------------------	---

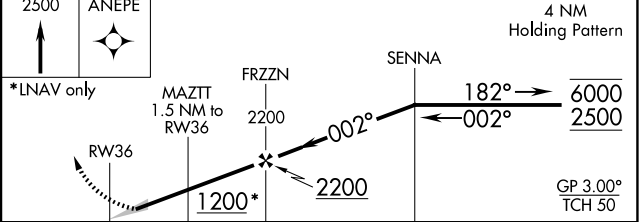
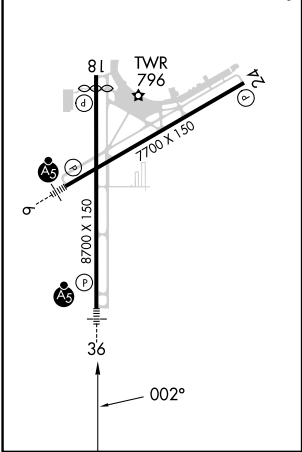
**RNAV (GPS) RWY 36**  
GREEN BAY/AUSTIN STRAUBEL INTL (GRB)

RNP APCH.	MALSR	MISSED APPROACH: Climb to 2500 direct ANEPE and hold.
ASR		
For uncompensated Baro-VNAV systems, LNAV/VNAV NA below -16°C or above 54°C. For inop ALS, increase LNAV/VNAV all Cats visibility to RVR 6000 and LNAV Cats C/D visibility to RVR 5500. ** RVR 1800 authorized with use of FD or AP or HUD to DA.		

ATIS <b>124.1</b>	GREEN BAY APP CON* <b>119.4 338.2</b>	GREEN BAY TOWER* <b>118.7 (CTAF) 0 257.8</b>	GND CON <b>121.9</b>	CLNC DEL <b>121.75</b>
----------------------	--	---	-------------------------	---------------------------



ELEV 695	<b>D</b>	TDZE 684
HIRL Rwy 6-24 and 18-36 REIL Rwy 18		



CATEGORY	A	B	C	D
LPV DA	884/24 200 (200-½)			
LNAV/VNAV DA	1097/40 413 (500-¾)			
LNAV MDA	1060/24 376 (400-½)	1060/35 376 (400-¾)		
CIRCLING	1200-1 505 (600-1)	1300-1¾ 605 (700-1¾)	1300-2 605 (700-2)	