

WAAS CH <b>42802</b> <b>W18A</b>	APP CRS <b>182°</b>	Rwy Idg TDZE Apt Elev	<b>8201</b> <b>695</b> <b>695</b>
--	------------------------	-----------------------------	---

RNAV (GPS) RWY 18

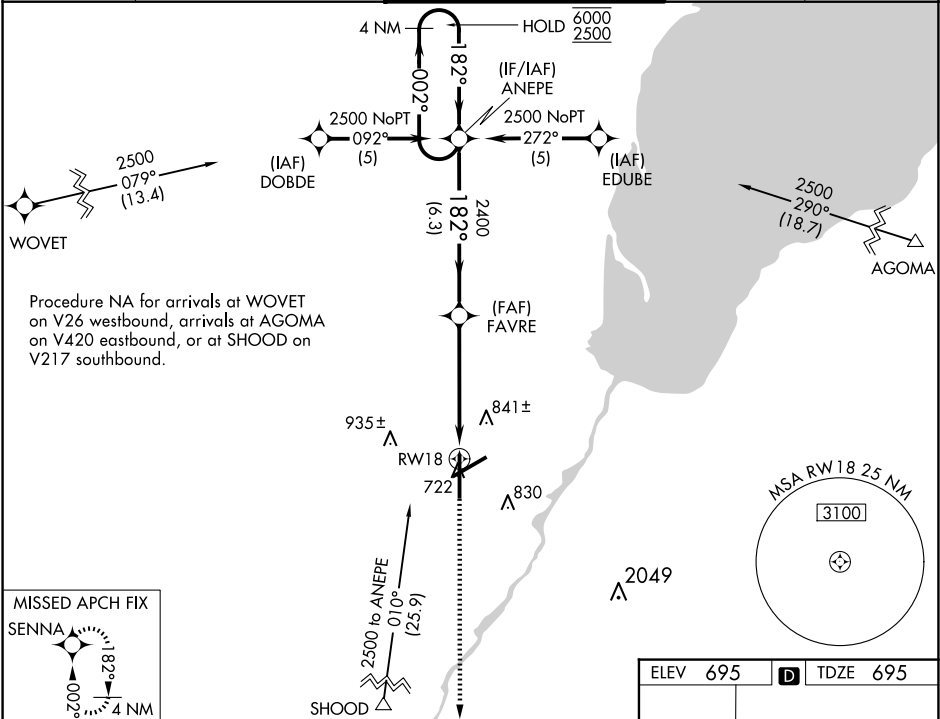
GREEN BAY/AUSTIN STRAUBEL INTL (GRB)

RNP APCH.

▼ For uncompensated Baro-VNAV systems, LNAV/VNAV NA below ASR -16° C or above 54° C.

MISSED APPROACH: Climb to 2500 direct SENNA and hold.

ATIS <b>124.1</b>	GREEN BAY APP CON* <b>119.4 338.2</b>	GREEN BAY TOWER* <b>118.7 (CTAF) 0 257.8</b>	GND CON <b>121.9</b>	CLNC DEL <b>121.75</b>
----------------------	--	---	-------------------------	---------------------------



4 NM Holding Pattern		VGSI and RNAV glidepath not coincident (VGSI angle 3.00/TCH 54).		2500 SENNA
ANEPE		FAVRE		*1.5 NM to RW18 *RNAV only
6000 2500 002° 182° 182°		2400		RW18
GP 3.00° TCH 50		6.3 NM 3.6 NM 1.5 NM		
CATEGORY	A	B	C	D
LPV DA	979-7 <sup>7</sup> / <sub>8</sub>		284 (300-7 <sup>7</sup> / <sub>8</sub> )	
LNAV/VNAV DA	1187-1 <sup>3</sup> / <sub>8</sub>		492 (500-1 <sup>3</sup> / <sub>8</sub> )	
LNAV MDA	1220-1	525 (600-1)	1220-1 <sup>1</sup> / <sub>2</sub>	525 (600-1 <sup>1</sup> / <sub>2</sub> )
CIRCLING	1220-1	525 (600-1)	1300-1 <sup>3</sup> / <sub>4</sub> 605 (700-1 <sup>3</sup> / <sub>4</sub> )	1300-2 605 (700-2)

