

LOC/DME I-GRB	APP CRS	Rwy Idg	7699
109.5	242°	TDZE	682
Chan 32		Apt Elev	695

LOC BC RWY 24

GREEN BAY/AUSTIN STRAUBEL INTL (GRB)

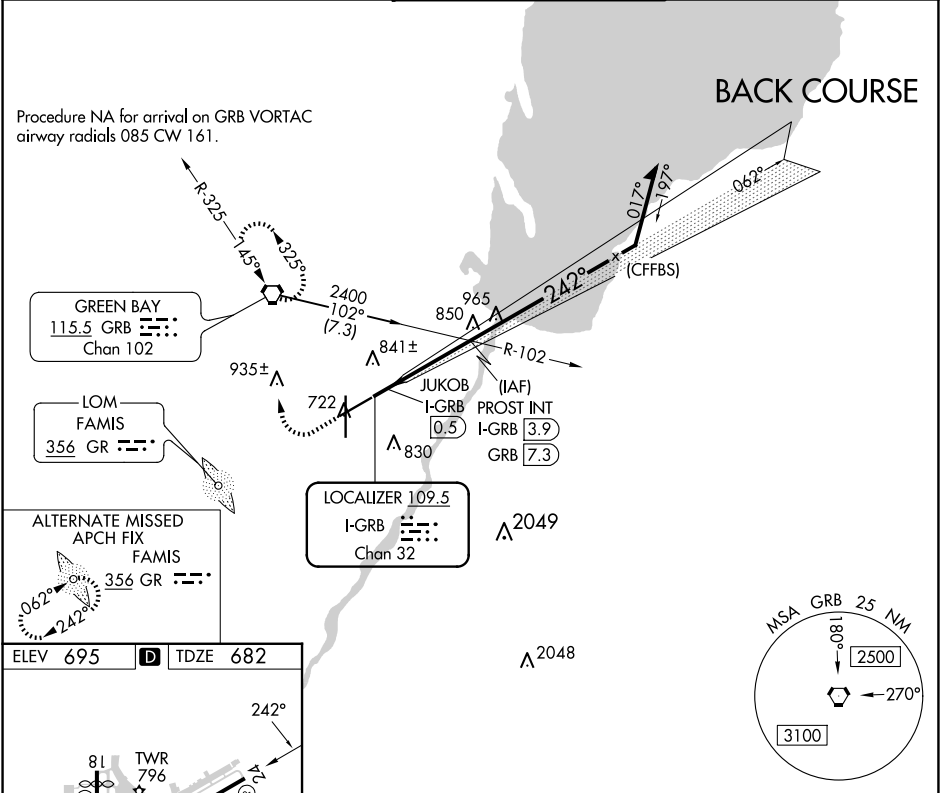
⚠

⚠

ASR

MISSED APPROACH: Climb to 1500 then climbing right turn to 2500 direct GRB VORTAC and hold.

ATIS	GREEN BAY APP CON★	GREEN BAY TOWER★	GND CON	CLNC DEL
124.1	119.4 338.2	118.7 (CTAF) 257.8	121.9	121.75



ELEV 695	TDZE 682
81	TWR 796
7700 X 150	
8700 X 150	
36	
REIL Rwy 18	
HIRL Rwys 6-24 and 18-36	
FAF to MAP 3.4 NM	
Knots	60 90 120 150 180
Min:Sec	3:24 2:16 1:42 1:21 1:08
CIRCLING	1200-1 505 (600-1)

1500	2500	GRB	PROST INT I-GRB 3.9	Remain within 10 NM
Disregard GS indications.	JUKOB I-GRB 0.5	2100	2400	062°
0.7	3.4 NM	TCH 50	Use I-GRB DME when on the localizer course.	
CATEGORY	A	B	C	D
S-24	1100-1 418 (500-1)		1100-1½ 418 (500-1½)	
CIRCLING	1200-1 505 (600-1)		1300-1¾ 605 (700-1¾)	1300-2 605 (700-2)