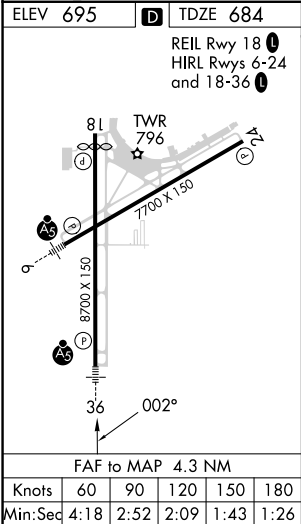
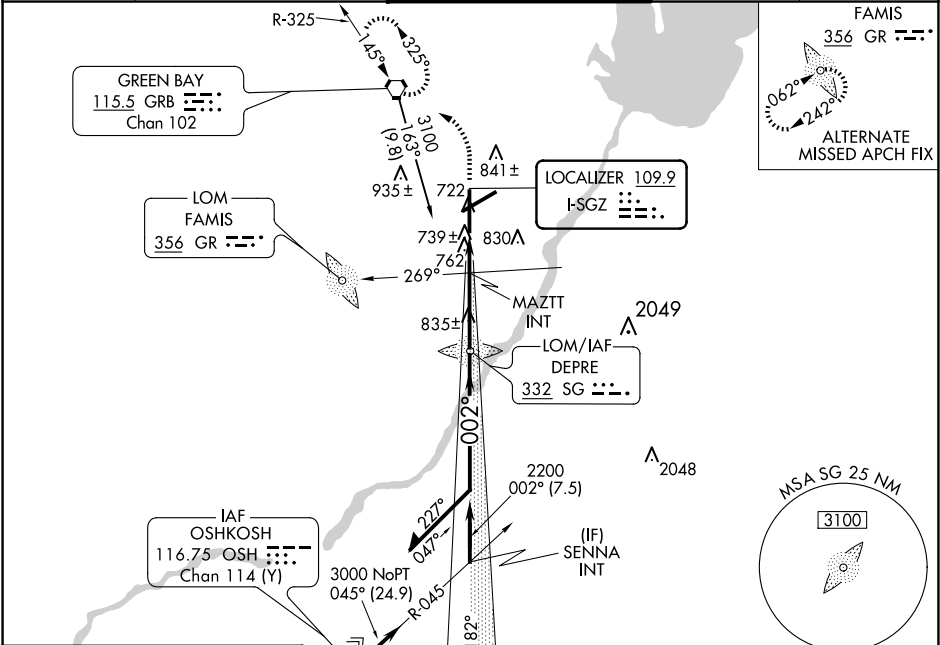


LOC I-SGZ <b>109.9</b>	APP CRS <b>002°</b>	Rwy Idg TDZE Apt Elev	<b>8201</b> <b>684</b> <b>695</b>
---------------------------	------------------------	-----------------------------	---

**ILS or LOC RWY 36**  
GREEN BAY/AUSTIN STRAUBEL INTL (GRB)

<b>NA</b> ASR	For inop ALS, increase S-LOC 36 Cats C/D visibility to 1½ SM. ** RVR 1800 authorized with the use of FD or AP or HUD to DA.	<b>MALSR</b> 	<b>MISSED APPROACH:</b> Climb to 1400 then climbing left turn to 2500 direct GRB VORTAC and hold.
------------------	--	------------------	---

<b>ATIS</b> <b>124.1</b>	<b>GREEN BAY APP CON *</b> <b>119.4 338.2</b>	<b>GREEN BAY TOWER *</b> <b>118.7 (CTAF) 257.8</b>	<b>GND CON</b> <b>121.9</b>	<b>CLNC DEL</b> <b>121.75</b>
-----------------------------	--	---	--------------------------------	----------------------------------



*LOC only		MAZTT INT	3100	2116	182°	Remain within 10 NM
		*1200	2200	002°	2700	GS 3.00° TCH 50
1.5 NM		2.8 NM				
CATEGORY	A		B		C	D
S-ILS 36			**884/24		200 (200-½)	
S-LOC 36	1200/24	516 (600-½)	1200/55		516 (600-1)	
CIRCLING	1200-1	505 (600-1)	1300-1¾ 605 (700-1¾)		1300-2 605 (700-2)	
MAZTT FIX MINIMUMS						
S-LOC 36	1020/24	336 (400-½)	1020/26		336 (400-½)	
CIRCLING	1200-1	505 (600-1)	1200-1½ 505 (600-1½)		1260-2 565 (600-2)	