

VORTAC LFK	APP CRS	Rwy Idg	4204
112.1	332°	TDZE	286
Chan 58		Apt Elev	296

VOR RWY 34  
ANGELINA COUNTY (L'F'K)

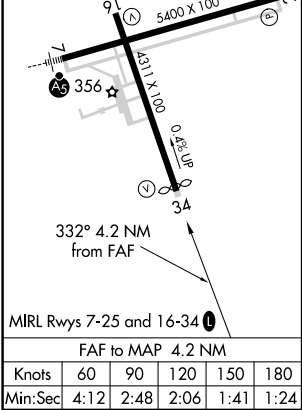
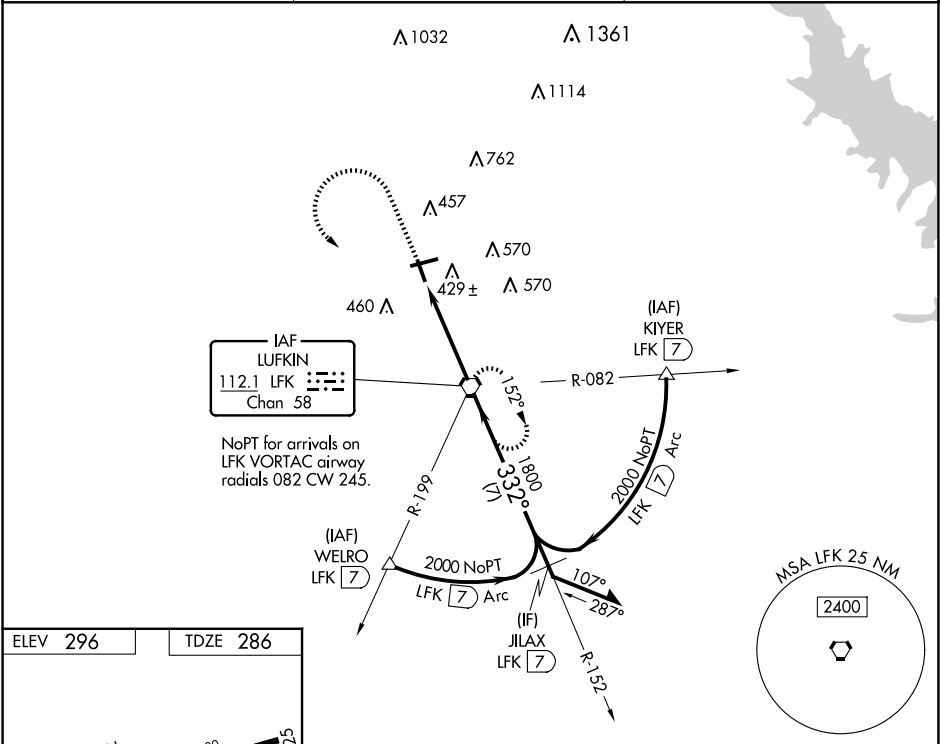
**▼**

**▲**

Rwy 34 helicopter visibility reduction below 1 SM NA.  
Straight-In Rwy 34 NA at night, Circling to Rwy 16, 25, 34 NA at night.

MISSED APPROACH: Climb to 900 then descending left turn to 2000 direct LFK VORTAC and hold.

ASOS 120.625	HOUSTON CENTER 125.175 285.575	UNICOM 123.0 (CTAF) 0
-----------------	-----------------------------------	--------------------------



900	2000	LFK	LFK VORTAC	Remain within 10 NM
VGSi and descent angles not coincident (VGSi Angle 3.00/TCH 55).				
LFK 4.2				
152°				
332°				
2000				
1800				
≤ 3.34° TCH 55				
4.2 NM				
CATEGORY	A	B	C	D
S-34	680-1	394 (400-1)	680-1½	394 (400-1½)
CIRCLING	740-1 444 (500-1)	760-1 464 (500-1)	880-1½ 584 (600-1½)	1140-2¾ 844 (900-2¾)

SC-5, 10 JUL 2025 to 07 AUG 2025

SC-5, 10 JUL 2025 to 07 AUG 2025