

VORTAC LFK	APP CRS	Rwy Idg	4311
112.1	152°	TDZE	289
Chan 58		Apt Elev	296

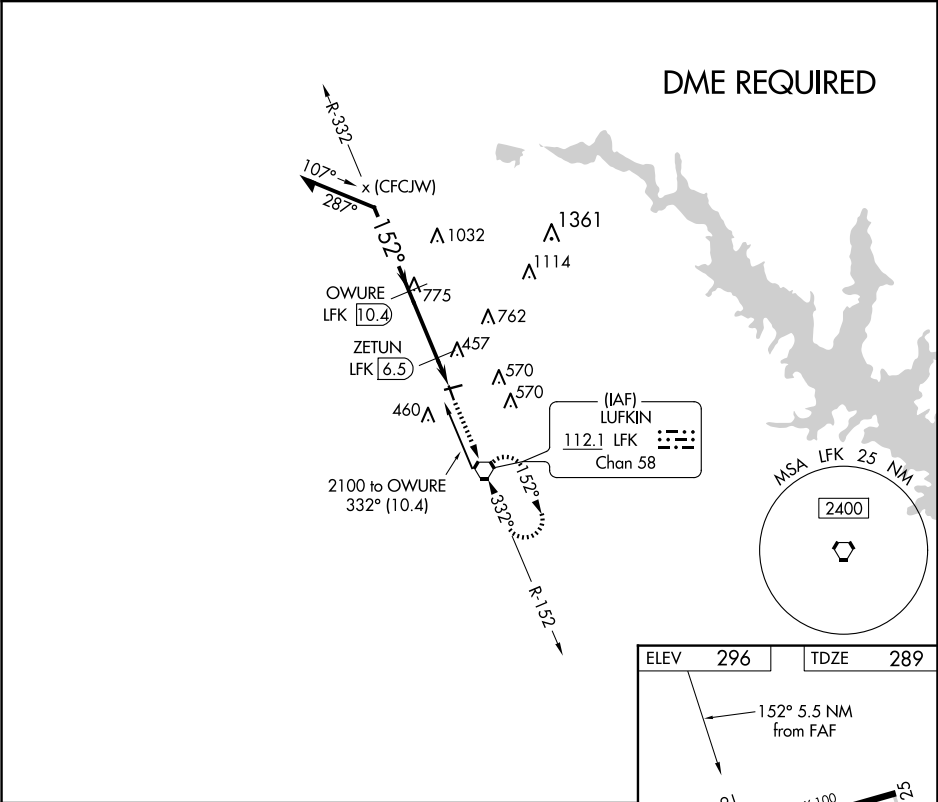
VOR RWY 16

ANGELINA COUNTY (L F K)

Rwy 16 helicopter visibility reduction below 1 SM NA.
DME Required. Straight-in Rwy 16 NA at night,
Circling Rwy 16, 25 NA at night.

MISSED APPROACH: Climb to 2000 on LFK VORTAC
R-332 to LFK VORTAC and hold.

ASOS 120.625	HOUSTON CENTER 125.175 285.575	UNICOM 123.0 (CTAF) 0
-----------------	-----------------------------------	--------------------------



Remain within 10 NM

OWURE LFK 10.4

2100

332°

152°

2100

3.00° TCH 48

860

3.9 NM

1.6 NM

2000 LFK

LFK R-332

LFK 4.8

LFK 6.5

LFK 10.4

91

152° 5.5 NM from FAF

5400 X 100

4311 X 100

0.45 X 100

34

356

AS

CATEGORY	A	B	C	D
S-16	720-1	431 (500-1)	720-1¼	431 (500-1¼)
CIRCLING	740-1 444 (500-1)	760-1 464 (500-1)	880-1½ 584 (600-1½)	1140-2¾ 844 (900-2¾)

MIRL Rwy 7-25 and 16-34 0