

WAAS CH <b>50105</b> <b>W07A</b>	APP CRS <b>073°</b>	Rwy Idg TDZE <b>287</b> Apt Elev <b>296</b>
--	------------------------	---

RNAV (GPS) RWY 7

ANGELINA COUNTY (LKF)

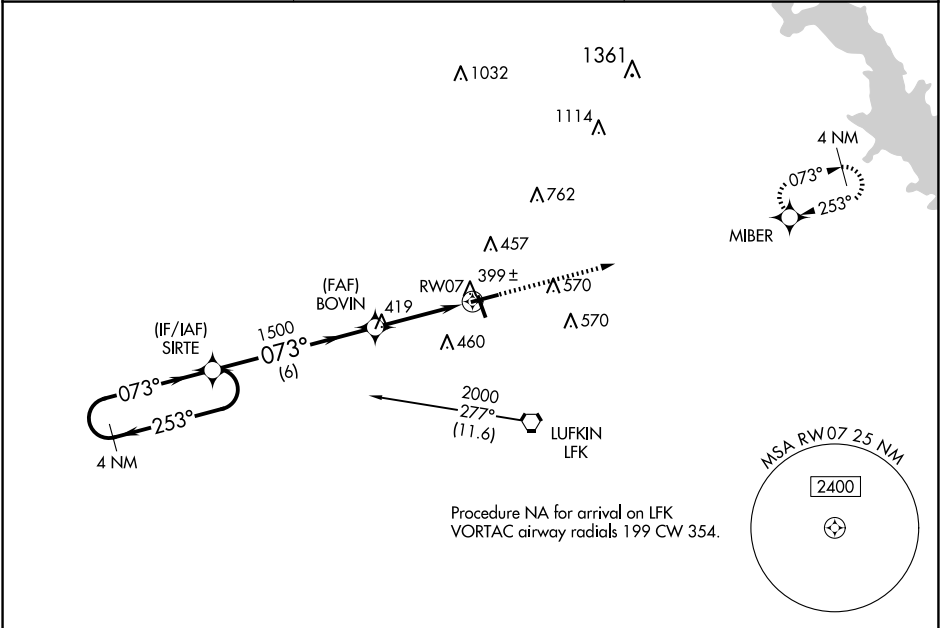
▼

For uncompensated Baro-VNAV systems, LNAV/VNAV NA below -4°C (25°F) or above 54°C (130°F). DME/DME RNP-0.3 NA. Circling Rwy 16, 25 NA at night.

MALSR

MISSED APPROACH: Climb to 2000 direct MIBER and hold.

ASOS <b>120.625</b>	HOUSTON CENTER <b>125.175 285.575</b>	UNICOM <b>123.0 (CTAF) 0</b>
------------------------	--	---------------------------------



ELEV 296		TDZE 287	
4 NM Holding Pattern		2000 MIBER	
SIRTE		*LNAV only.	
2000 ← 253°		BOVIN 1500	
GP 3.00° TCH 50		*1 NM to RW07	
← 073° →		RW07	
6 NM		2.7 NM	
CATEGORY	A	B	C
LPV DA	537-½	250 (300-½)	
LNAV/VNAV DA	563-½	276 (300-½)	
LNAV MDA	660-½	373 (400-½)	660-⅝ 373 (400-⅝)
CIRCLING	740-1 444 (500-1)	760-1 464 (500-1)	880-1½ 584 (600-1½)
			1140-2¾ 844 (900-2¾)

MIRL Rwy 7-25 and 16-34 0