

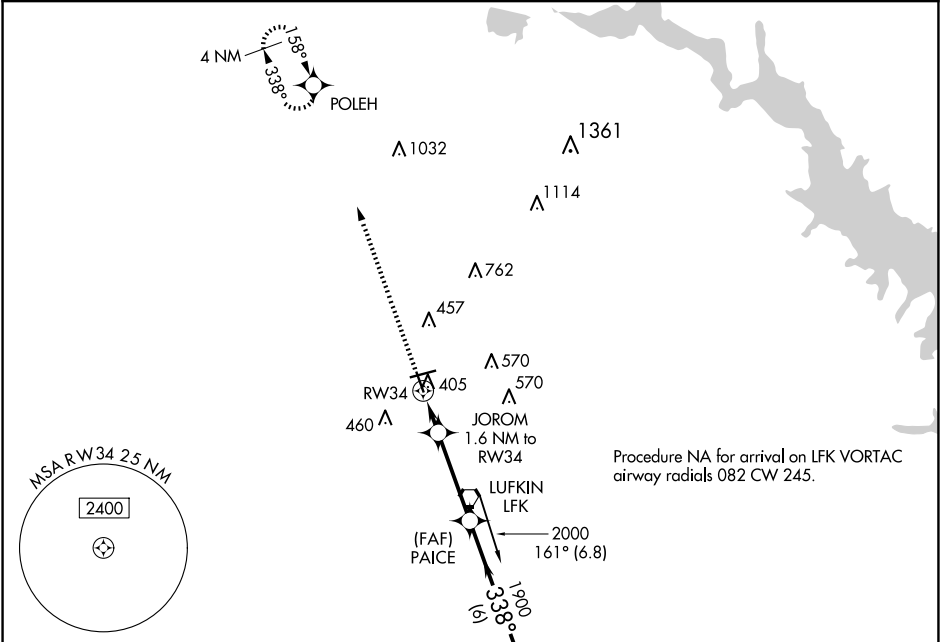
APP CRS	Rwy Idg	4204
338°	TDZE	286
	Apt Elev	296

RNAV (GPS) RWY 34

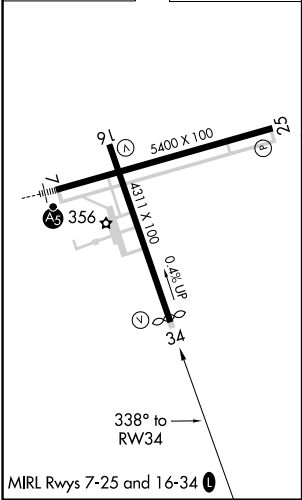
ANGELINA COUNTY (L'F'K)

<div><div>▼</div><div>▲</div></div> <div>DME/DME RNP-0.3 NA. Circling Rwy 16, 25 NA at night. Rwy 34 helicopter visibility reduction below ¾ SM NA.</div>	MISSED APPROACH: Climb to 2100 direct POLEH and hold.
---------------------------------------------------------------------------------------------------------------------------------------------------------------	-------------------------------------------------------

ASOS 120.625	HOUSTON CENTER 125.175 285.575	UNICOM 123.0 (CTAF) 0
-----------------	-----------------------------------	--------------------------



ELEV 296	TDZE 286
----------	----------



2100 ↑ POLEH ☀		EXISE 4 NM Holding Pattern			
JOROM 1.6 NM to RW34		PAICE 3.00° TCH 55		158° → 2000 ← 338°	
1 NM to RW34 RW34		1900			
1 NM 0.6		3.3 NM		6 NM	
CATEGORY		A		B C D	
LNAV MDA		660-1 374 (400-1)			
CIRCLING		740-1 444 (500-1)	760-1 464 (500-1)	880-1½ 584 (600-1½)	1140-2¾ 844 (900-2¾)

SC-5, 10 JUL 2025 to 07 AUG 2025

SC-5, 10 JUL 2025 to 07 AUG 2025