

WAAS CH <b>63136</b> <b>W30A</b>	APP CRS <b>307°</b>	Rwy Ldg <b>7500</b> TDZE <b>4444</b> Apt Elev <b>4457</b>
--	------------------------	---

RNAV (GPS) RWY 30  
LAS CRUCES INTL (LRU)

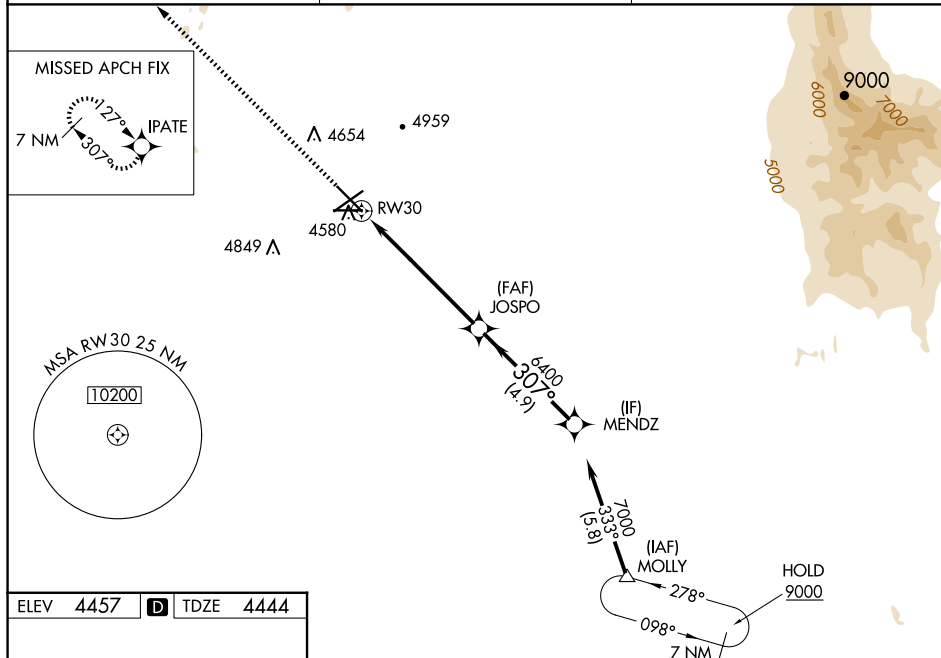
**V** For uncompensated Baro-VNAV systems, LNAV/VNAV NA below -12°C (11°F) or above 51°C (124°F). DME/DME RNP-0.3 NA. Baro-VNAV and VDP NA when using Deming altimeter setting. When local altimeter setting not received, use Deming altimeter setting: increase LPV DA to 475 feet, LNAV/VNAV DA to 4863 feet and all visibilities ½ mile; increase all MDA 120 feet and visibility Cat C and D ½ mile.

MALSR



**MISSED APPROACH:** Climb to 9000 direct IPATE and hold, continue climb-in-hold to 9000.

AWOS-3 <b>119.025</b>	ALBUQUERQUE CENTER <b>128.2 285.5</b>	UNICOM <b>122.7 (CTAF) 0</b>
--------------------------	--	---------------------------------



ELEV	4457	<b>D</b>	TDZE	4444
------	------	----------	------	------

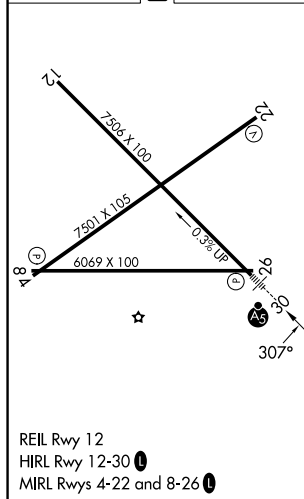


Diagram illustrating a 47° climb gradient (TCH) for a flight path. The path starts at a runway (RW30) and ascends to a 47° climb gradient. Key points include JOSPO (6400) and MENDZ (7000). The path is divided into segments of 1.1 NM, 4.9 NM, and 4.9 NM. The total distance is 10.9 NM. The diagram also shows a 307° heading and a 6400 altitude. The diagram is labeled "GP 3.00° TCH 47°".