

WAAS CH <b>93836</b> <b>W12A</b>	APP CRS <b>127°</b>	Rwy Ldg TDZE Apt Elev <b>7506</b> <b>4457</b> <b>4457</b>
--	------------------------	--

RNAV (GPS) RWY 12

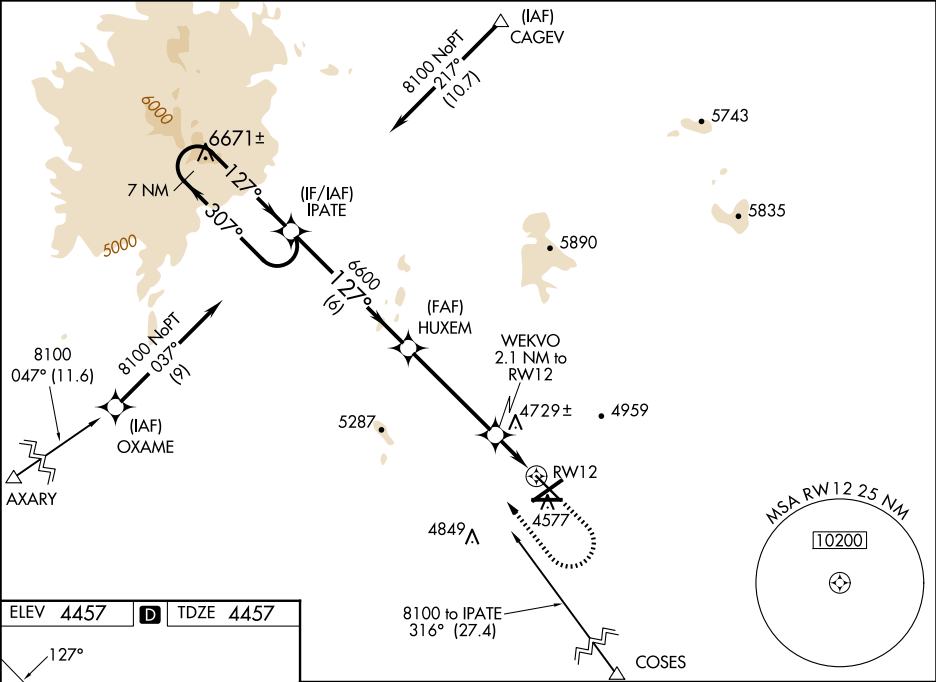
LAS CRUCES INTL (LRU)

⚠

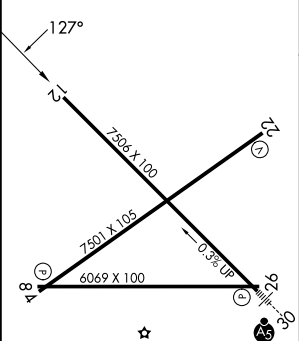
For uncompensated Baro-VNAV systems, LNAV/VNAV NA below -12 °C (11°F) or above 49°C (120°F). DME/DME RNP-0.3 NA. Helicopter visibility reduction below ¾ SM NA. Baro-VNAV and VDP NA when using Deming altimeter setting. When local altimeter setting not received, use Deming altimeter setting: increase LPV DA to 4821 feet and LNAV/VNAV DA to 4824 feet and all visibilities ½ mile; increase all MDA 120 feet and visibility Cat C and D ½ mile.

MISSED APPROACH: Climb to 5800 then climbing right turn to 8100 direct IPATE and hold.

AWOS-3 <b>119,025</b>	ALBUQUERQUE CENTER <b>128.2 285.5</b>	UNICOM <b>122.7 (CTAF) 0</b>
--------------------------	--	---------------------------------



ELEV <b>4457</b>	<b>D</b>	TDZE <b>4457</b>
------------------	----------	------------------



REIL Rwy 12  
HIRL Rwy 12-30 0  
MIRL Rwy 4-22 and 8-26 0

7 NM Holding Pattern		IPATE	HUXEM	WEKVO 2.1 NM to RWY12	5800	8100	IPATE
8100 ← 307°		127° →	127°	6600	↑	↷	✦
GP 3.00° TCH 55			6600	*1.2 NM to RWY12	*LNAV only.		
			*5180	↘			
			6 NM	4.5 NM	0.9	1.2 NM	
CATEGORY	A	B	C	D			
LPV DA	4707-¾		250 (300-¾)				
LNAV/VNAV DA	4710-¾		253 (300-¾)				
LNAV MDA	4900-1	443 (500-1)	4900-1⅓	443 (500-1⅓)			
CIRCLING	4900-1 443 (500-1)	5040-1 583 (600-1)	5320-2½ 863 (900-2½)	5320-2¾ 863 (900-2¾)			