

WAAS CH 65708 W02A	APP CRS 018°	Rwy Idg TDZE 488 Apt Elev 488	6201 488 488
--	------------------------	---	---

RNAV (GPS) RWY 2

DILLANT/HOPKINS (EEN)

RNP APCH - GPS

▼

▲

☁ -21°C

Circling Rwy 32 NA at night. Rwy 2 helicopter visibility reduction below ¾ SM NA. Inop table does not apply to LPV all Cats and LNAV Cat A. For inop ALS, increase LNAV Cat B visibility to 1 ¼ SM. When local altimeter setting not received, use ORE altimeter setting; increase LPV DA to 897; increase all MDAs 60 feet. For inop ALS when using ORE altimeter setting, increase LNAV Cats A/B visibility to 1 ¼ SM. VDP NA when using ORE altimeter setting.

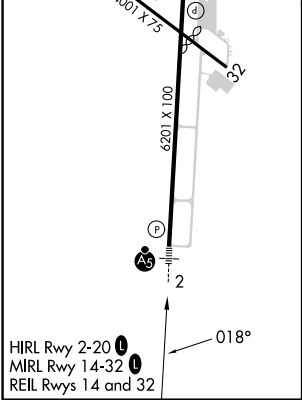
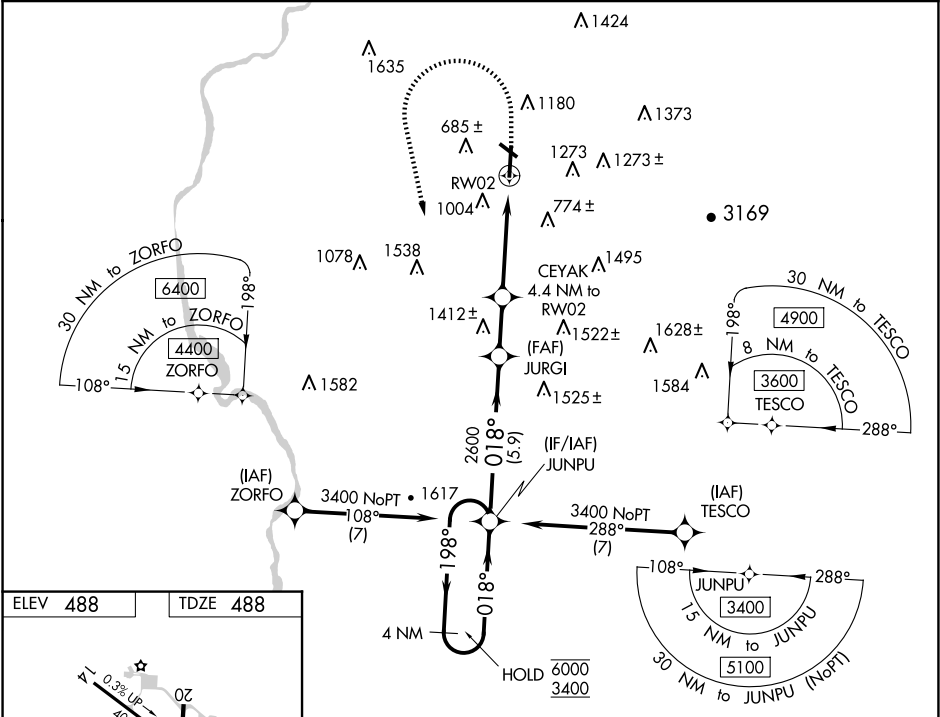
MALSRL

AS

⋮

MISSED APPROACH:
Climb to 1600 then climbing left turn to 3400 direct JUNPU and hold.

AWOS-3PT 119.025	BOSTON CENTER 123.75 338.2	UNICOM 123.0 (CTAF) 0
----------------------------	--------------------------------------	---------------------------------



4 NM Holding Pattern		VGSI and RNAV glidepath not coincident (VGSI Angle 3.00/TCH 39).		1600	3400	JUNPU
				↑	↶	✧
GP 3.00° TCH 43		JUNPU 2600		JURGI 2600	CEYAK 4.4 NM to RW02	2.5 NM to RW02
6000 3400		198° 018°		2600	1920	
		5.9 NM		2.1 NM	1.9 NM	2.5 NM
CATEGORY	A	B	C	D		
LPV DA	843-1		355 (400-1)			
LNAV MDA	1340-1	852 (900-1)	1340-2	852 (900-2)		
CIRCLING	1380-1 ¼ 892 (900-1 ¼)	1480-1 ½ 992 (1000-1 ½)	1760-3 1272 (1300-3)	1980-3 1492 (1500-3)		