

LOC I-EEN <u>108.9</u>	APP CRS 018°	Rwy Idg 6201 TDZE 488 Apt Elev 488
----------------------------------	------------------------	---

ILS or LOC RWY 2
DILLANT/HOPKINS (EEN)

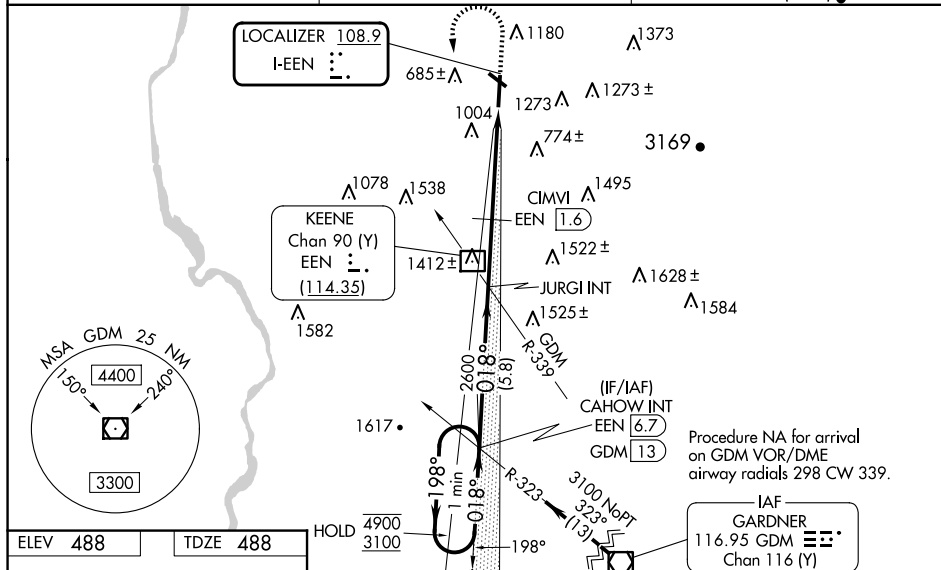
DME required for LOC only.

V Circling Rwy 32 NA at night. Rwy 2 helicopter visibility reduction below $\frac{3}{4}$ SM NA. Inop table does not apply to S-LOC 2 Cat C, S-LOC 2 Cats C/D and CIMV1 fix minimums S-LOC 2 Cat A. For inop ALS, increase S-LOC 2 Cat A visibility to $\frac{1}{4}$ SM and increase CIMV1 fix minimums S-LOC 2 Cat B visibility to $\frac{1}{4}$ SM and Cat C/D visibility to $\frac{2}{5}$ SM. When local altimeter setting not received, use ORE altimeter setting and increase S-LOC 2 DA to 914; increase all MDAs 60 feet and increase CIMV1 fix minimums S-LOC 2 Cats C and D visibility $\frac{1}{8}$ SM. Inop table does not apply to S-LOC 2 Cats C/D when using ORE altimeter setting. For inop ALS when using ORE altimeter setting, increase S-LOC 2 Cat A visibility to $\frac{1}{4}$ SM and increase CIMV1 fix minimums S-LOC 2 Cats A/B visibility to $\frac{1}{4}$ SM. VDP NA when using ORE altimeter setting. DME from EEN DME. DME use requires simultaneous reception of I-EN and EEN DME.

MALSR

MISSED APPROACH:
Climb to 1540 then
climbing left turn to
3100 on heading
200° and GDM
VOR/DME R-323 to
CAHOW INT/GDM
VOR/DME 13 DME
and hold.

AWOS-3PT 119.025	BOSTON CENTER 123.75 338.2	UNICOM 123.0 (CTAF) 0
----------------------------	--------------------------------------	---------------------------------



One Minute Holding Pattern EEN 5.7

JURGI INT

EEN DME CIMVI EEN 1.6 3.2 EEN 5.7

GDM R-323 CAHOW INT

4900 ← 198°

3100 → 018°

GS 3.00° TCH 43

VGS/ILS glidepath not coincident (VGS/ILS Angle 3.00/TCH 39)

2600

1840

5.8 NM 2.4 NM 1.6 NM 2.5 NM

0.3% UP 4001 X 75

6201 X 100

REIL Rwy 14 and 32

HIRL Rwy 2-20

MIRL Rwy 14-32

FAF to MAP 6.5 NM

Category	A	B	C	D
S-ILS 02	860-1	372 (400-1)		
S-LOC 02	1840-1	1352 (1400-1)	1840-3	1352 (1400-3)
CIRCLING	1840-1 1/4 1352 (1400-1 1/4)	1840-1 1/2 1352 (1400-1 1/2)	1840-3 1352 (1400-3)	1980-3 1492 (1500-3)
CIMVI FIX MINIMUMS (DME REQUIRED)				
S-LOC 02	1320-1	832 (900-1)	1320-1 1/2	832 (900-1 1/2)
CIRCLING	1420-1 1/4 932 (1000-1 1/4)	1480-1 1/2 992 (1000-1 1/2)	1760-3 1272 (1300-3)	1980-3 1492 (1500-3)

KEENE, NEW HAMPSHIRE
Amdt 6A 31OCT24

42°54'N-72°16'W

DILLANT/HOPKINS (EEN)
ILS or LOC RWY 2

NE-1, 10 JUL 2025 to 07 AUG 2025

NE-1, 10 JUL 2025 to 07 AUG 2025