

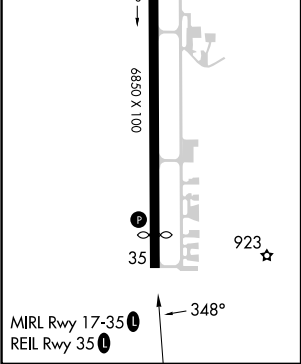
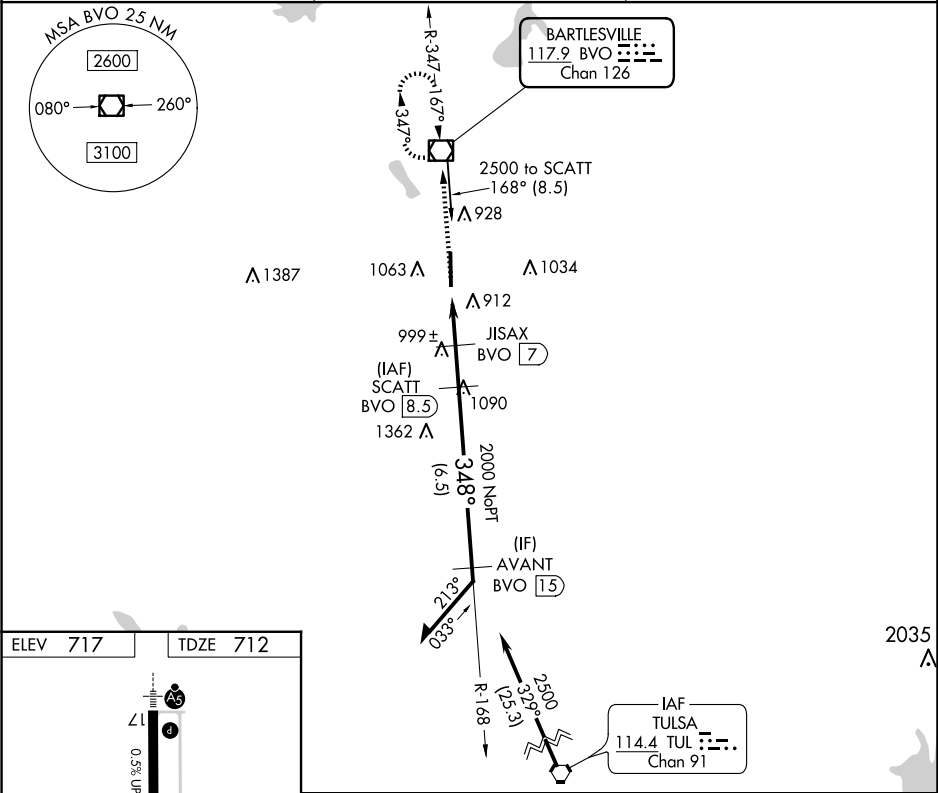
⚠

⚠

Circling NA east of Rwy 17-35. When local altimeter setting not received, use Tulsa Intl altimeter setting and increase all MDAs 100 feet and S-35 and Circling Cat C visibility ¼ SM. VDP NA when using Tulsa Intl altimeter setting.

MISSED APPROACH: Climb to 2500 direct BVO VOR/DME and hold.

ASOS 132.675	KANSAS CITY CENTER 128.6 282.325	CTAF 122.825 0
-----------------	-------------------------------------	-------------------



2500	BVO	JISAX BVO (7)	SCATT BVO (8.5)	Remain within 10 NM
2500	BVO (6.5)	BVO (4.7)	3.10° TCH 45	2500
1500	2000	1.8	0.5	1.5 NM
CATEGORY	A	B	C	D
S-35	1320-1	608 (700-1)	1320-1¾ 608 (700-1¾)	NA
CIRCLING	1400-1	683 (700-1)	1400-2 683 (700-2)	NA