

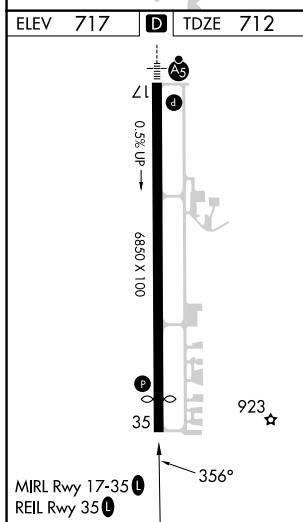
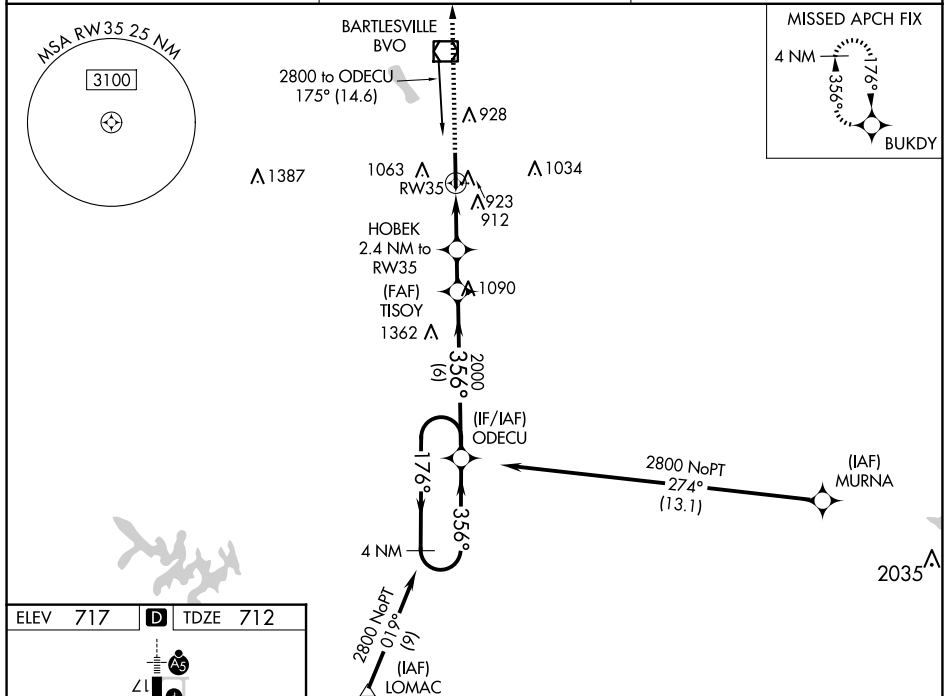
WAAS CH 61305 W35A	APP CRS 356°	Rwy Idg 6201 TDZE 712 Apt Elev 717
--	------------------------	---

RNAV (GPS) RWY 35
BARTLESVILLE MUNI (BVO)

▼ For uncompensated Baro-VNAV systems, LNAV/VNAV NA below -18°C (0°F) or above 54°C (130°F).
▲ DME/DME RNP-0.3 NA. When local altimeter setting not received, use Tulsa Intl altimeter setting and increase all DA 85 feet and all MDA 100 feet, increase LPV all Cats visibility ¼ mile, LNAV/VNAV all Cats visibility ⅓ mile, LNAV and Circling Cat C visibility ¼ mile. Circling NA east of Rwy 17-35. Baro-VNAV and VDP NA when using Tulsa Intl altimeter setting. Helicopter visibility reduction below ¾ SM NA.

MISSED APPROACH:
Climb to 3100 direct
BUKDY and hold.

ASOS 132.675	KANSAS CITY CENTER 128.6 282.325	CTAF 122.825 0
------------------------	--	--------------------------

[illegible]