

WAAS
CH **58201**
W17A

APP CRS
176°

Rwy Idg
TDZE
Apt Elev
6201
694
717

RNAV (GPS) RWY 17

BARTLESVILLE MUNI (BVO)

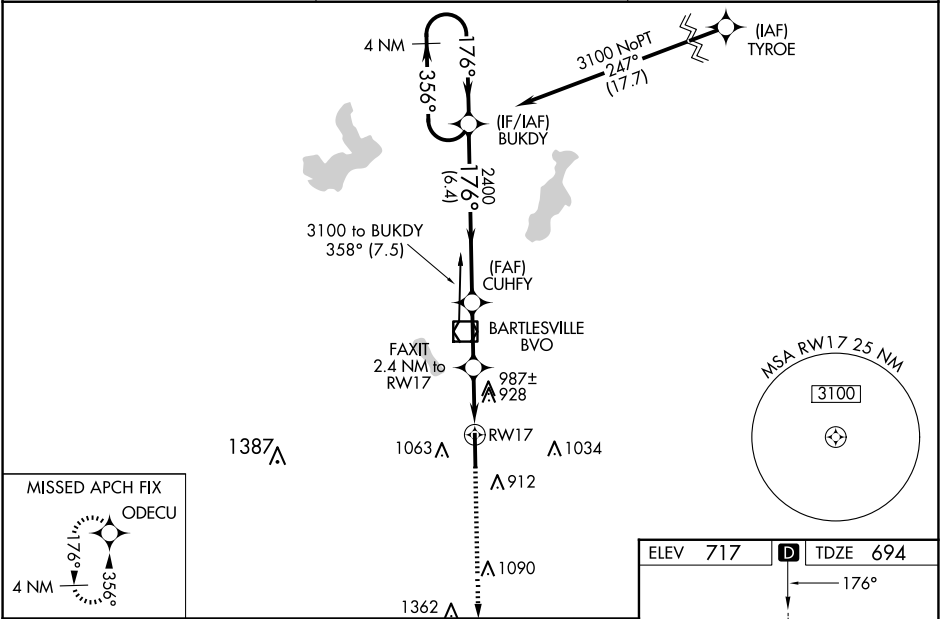
⚠

For uncompensated Baro-VNAV systems, LNAV/VNAV NA below -18°C (0°F) or above 54°C (130°F). DME/DME RNP-0.3 NA. When local altimeter setting not received, use Tulsa Intl altimeter setting and increase all DA 85 feet and all MDA 100 feet, increase LPV all Cats, LNAV/VNAV all Cats, LNAV and Circling Cat C visibility ¼ mile. Inop table does not apply to LPV all Cats. For inop MALSR, increase LNAV Cat A/B visibility to 1 mile. For inop MALSR when use Tulsa Intl altimeter setting, increase LNAV/VNAV all Cats visibility to 2½ mile, and LNAV Cat A/B visibility to 1 mile. Circling NA east of Rwy 17-35. Baro-VNAV and VDP NA when using Tulsa Intl altimeter setting. Helicopter visibility reduction below ¾ SM NA.

MALSR

MISSED APPROACH:
Climb to 2800 direct
ODECU and hold.

ASOS 132.675	KANSAS CITY CENTER 128.6 282.325	CTAF 122.825 0
------------------------	--	--------------------------



4 NM Holding Pattern

BUKDY

CUHFI

FAXIT 2.4 NM to RWY17

RWY17

ODECU

2800

*LNAV only.

GP 3.30° TCH 55

2400

*1580

*1.8 NM to RWY17

6.4 NM

2.3 NM

0.6

1.8

VGSI and RNAV glidepath not coincident (VGSI Angle 3.00/TCH 53).

CATEGORY	A	B	C	D
LPV DA	906-¾ 212 (200-¾)		944-¾ 250 (300-¾)	NA
LNAV/VNAV DA	1317-1½ 623 (700-1½)			NA
LNAV MDA	1240-¾ 546 (600-¾)		1240-1⅛ 546 (600-1⅛)	NA
CIRCLING	1380-1 663 (700-1)		1400-2 683 (700-2)	NA

