

LOC I-BVO

111.3

APP CRS

176°

Rwy Idg

6201

TDZE

694

Apt Elev

717

LOC RWY 17

BARTLESVILLE MUNI (BVO)

▼

NA

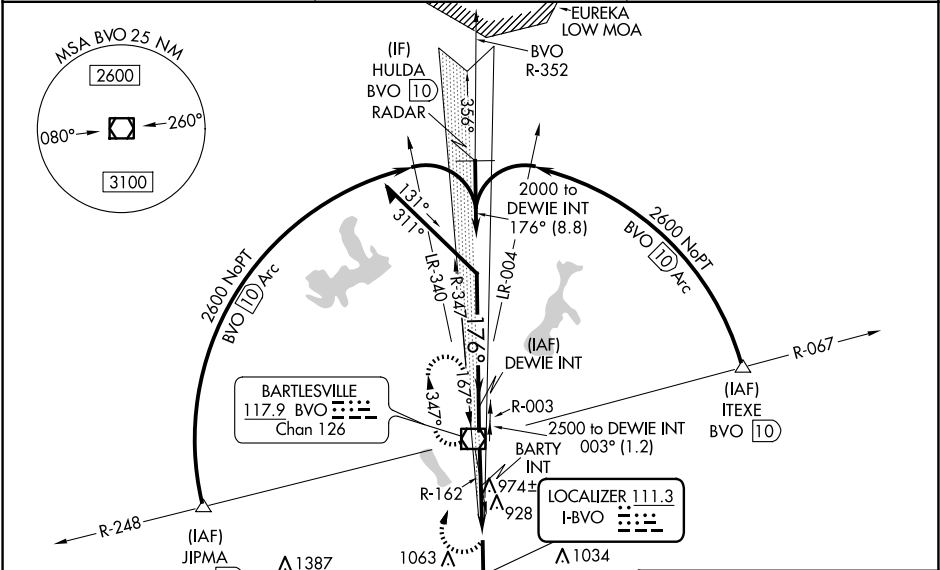
Circling NA east of Rwy 17-35. Rwy 17 helicopter visibility reduction below ¾ SM NA. When local altimeter setting not received, use Tulsa Intl altimeter setting and increase all MDAs 100 feet and S-17 visibility Cat C ¼ SM, and Circling Cats B and C ½ SM; increase BARTY fix minimums visibility Cat C ¼ SM. For inop ALS, increase S-17 visibility Cats A and B to 1 SM. For inop ALS when using Tulsa Intl altimeter setting, increase S-17 visibility Cat A to 1 SM and Cat C to 2½ SM, and BARTY fix minimums S-17 visibility Cats A and B to 1 SM.

MALSR

MISSED APPROACH:

Climbing right turn to 2500 direct BVO VOR/DME and hold, continue climb-in-hold to 2500.

ASOS	KANSAS CITY CENTER	CTAF
132.675	128.6 282.325	122.825 0



Remain within 10 NM

DEWIE INT

2500

356°

176°

2000

3.00° TCH 53

BARTY INT

*1380

2.9 NM

2 NM

2500

BVO

*1480 when using Tulsa Intl altimeter setting.

CATEGORY	A	B	C	D
S-17 *	1380-¾	686 (700-¾)	1380-1½	686 (700-1½)
CIRCLING	1380-1	663 (700-1)	1400-2	683 (700-2)
BARTY FIX MINIMUMS (DUAL VOR RECEIVERS REQUIRED)				
S-17	1240-¾	546 (600-¾)	1240-1½	546 (600-1½)
CIRCLING	1380-1	663 (700-1)	1400-2	683 (700-2)

ELEV 717

TDZE 694

176°

0.5° UP

6850 X 100

MIRL Rwy 17-35

REIL Rwy 35

923

FAF to MAP 4.9 NM

Knots	60	90	120	150	180
Min:Sec	4:54	3:16	2:27	1:58	1:38