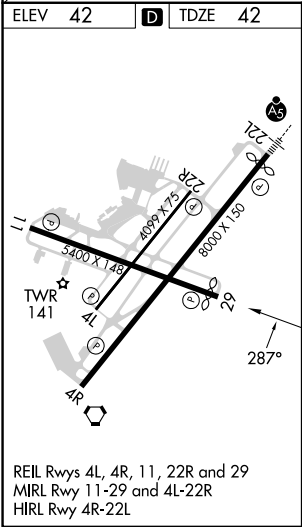
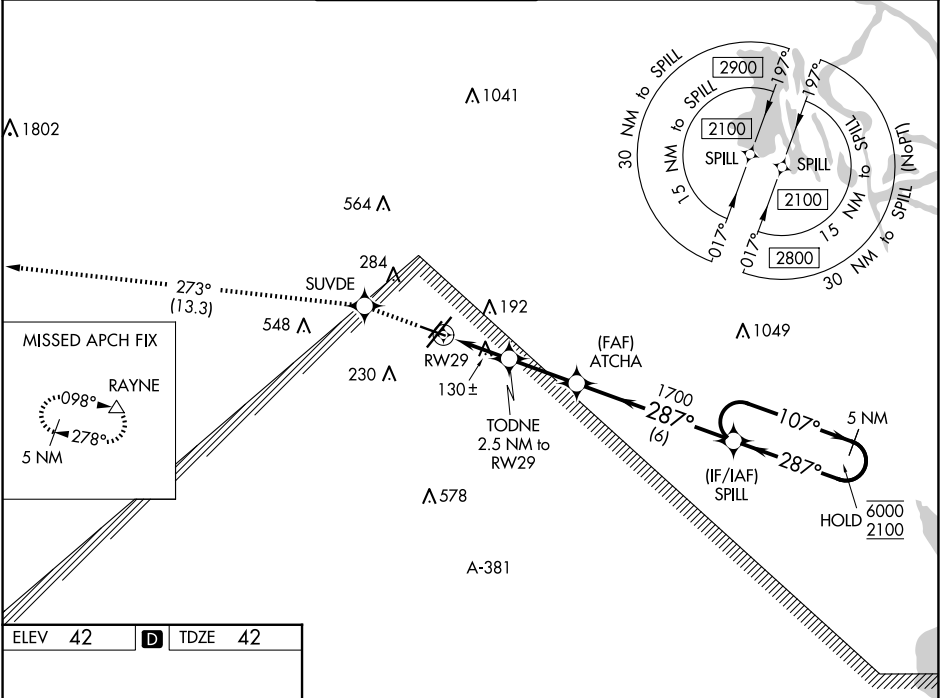



WAAS CH 45703 W29A	APP CRS 287°	Rwy ldg 5150 TDZE 42 Apt Elev 42
--	------------------------	---

RNAV (GPS) RWY 29

LAFAYETTE RGNL/PAUL FOURNET FLD (L.F'T')

RNP APCH.				MISSED APPROACH: Climb to 2800 direct SUVDE and on track 273° to RAYNE and hold.	
Rwy 29 helicopter visibility reduction below ¾ SM NA. For uncompensated Baro-VNAV systems, LNAV/VNAV NA below -2°C or above 54°C.					
ATIS 134.05	LAFAYETTE APP CON ★ 121.1 363.0	LAFAYETTE TOWER ★ 118.5 (CTAF) 0 257.8	GND CON 121.8	CLNC DEL 125.55	UNICOM 122.95



ELEV 42		D	TDZE 42	
2800		SUVDE	fr 273°	RAYNE
*LNAV only.		TODNE 2.5 NM to RW29	ATCHA 1700	SPILL 5 NM Holding Pattern
*0.9 NM to RW29		*880	1700	GP 3.00° TCH 51
0.9		1.6	2.6 NM	6 NM
CATEGORY	A	B	C	D
LPV DA	292-¾		250 (300-¾)	
LNAV/VNAV DA	292-¾		250 (300-¾)	
LNAV MDA	380-1		338 (400-1)	
 CIRCLING	500-1 458 (500-1)	580-1 538 (600-1)	700-1¾ 658 (700-1¾)	700-2 658 (700-2)

SC-4, 10 JUL 2025 to 07 AUG 2025

SC-4, 10 JUL 2025 to 07 AUG 2025