

QUINCY, ILLINOIS

AL-862 (FAA)

25051

WAAS CH <b>45705</b> <b>W22A</b>	APP CRS <b>218°</b>	Rwy Idg <b>7098</b> TDZE <b>753</b> Apt Elev <b>768</b>
--	------------------------	---

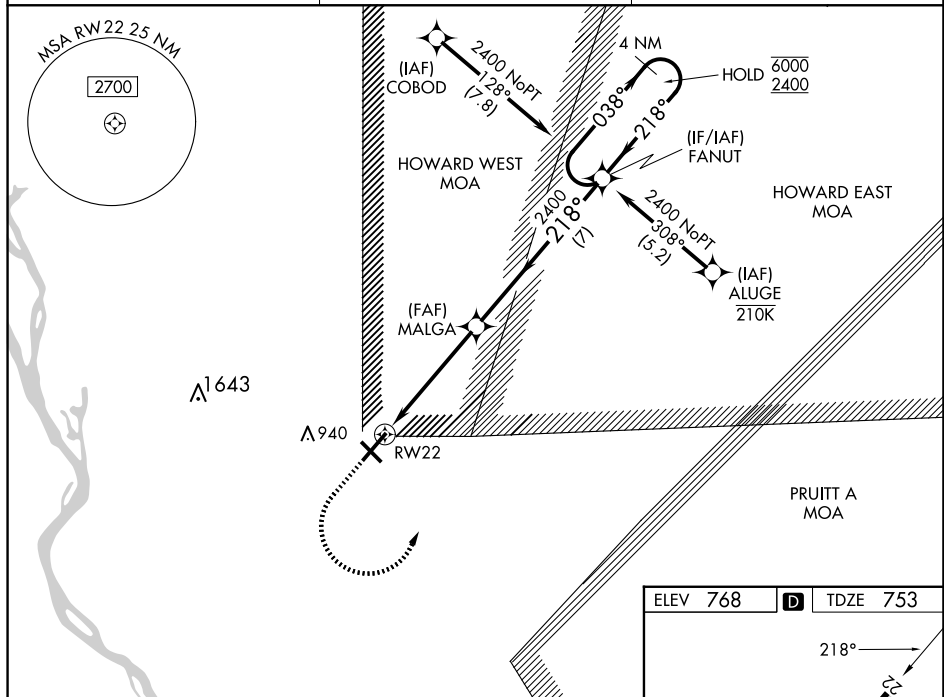
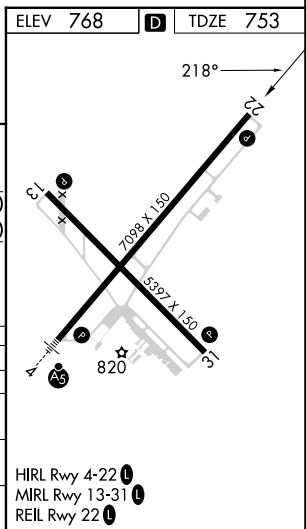
RNAV (GPS) RWY 22  
QUINCY RGNL-BALDWIN FLD (UIN)

RNP APCH - GPS.

**T** For uncompensated Baro-VNAV systems, LNAV/VNAV NA below -21°C or above 54°C. Baro-VNAV and VDP NA when using Pittsfield altimeter setting. When local altimeter setting not received, use Pittsfield altimeter setting and increase LPV DA to 1073 feet and all visibilities  $\frac{1}{8}$  SM. Increase LNAV/VNAV DA to 1120 feet and all visibilities  $\frac{1}{8}$  SM. Increase all MDAs 80 feet and LNAV visibility Cat C/D  $\frac{1}{8}$  SM.

**MISSED APPROACH:** Climb to 1300 then climbing left turn to 2400 direct FANUT and hold.

ASOS <b>121.425</b>	KANSAS CITY CENTER <b>126.225 317.775</b>	UNICOM <b>123.0 (CTAF) 0</b>
------------------------	--	---------------------------------

[illegible]

QUINCY, ILLINOIS  
Amdt 2 26DEC24

39°57'N-91°12'W

QUINCY RGNL-BALDWIN FLD (UIN)  
RNAV (GPS) RWY 22

EC-3, 10 JUL 2025 to 07 AUG 2025