

WAAS  
CH **65910**  
**W13A**

APP CRS  
**133°**

Rwy Idg  
TDZE **767**  
Apt Elev **769**

**RNAV (GPS) RWY 13**

QUINCY RGNL-BALDWIN FLD (UIN)

RNP APCH.

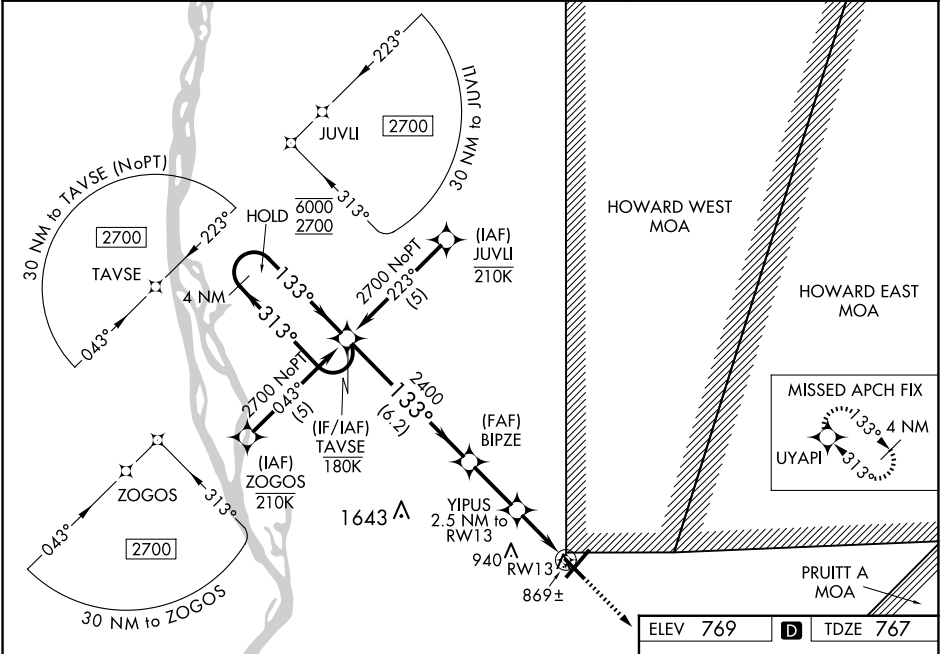
T

A

For uncompensated Baro-VNAV systems, LNAV/VNAV NA below -16° C or above 54° C.

MISSED APPROACH:  
Climb to 2700 direct UYAPI and hold.

ASOS <b>121.425</b>	KANSAS CITY CENTER <b>126.225 317.775</b>	UNICOM <b>123.0 (CTAF) 0</b>
------------------------	--	---------------------------------



4 NM Holding Pattern

VGSI and RNAV glidepath not coincident (VGSI Angle 3.00/TCH 33).

GP 3.00° TCH 45

6000 2700 133° 133°

2400 1600 133°

6.2 NM 2.4 NM 1.5 NM 1 NM

UYAPI 2700

\*LNAV only.

\*1 NM to RW13

RW13

7098 X 150 5397 X 150

820

CATEGORY	A	B	C	D
LPV DA	1116-1¼ 349 (400-1¼)			
LNAV/VNAV DA	1139-1¼ 372 (400-1¼)			
LNAV MDA	1120-1 353 (400-1)			1120-1¼ 353 (400-1¼)
CIRCLING	1180-1 411 (500-1)	1220-1 451 (500-1)	1240-1½ 471 (500-1½)	1320-2 551 (600-2)

HIRL Rwy 4-22 0

MIRL Rwy 13-31 0

REIL Rwy 22 0