

LOC I-UIIN 110.1	APP CRS 218°	Rwy Idg TDZE Apt Elev	7098 753 768
-----------------------------------	------------------------	-----------------------------	---

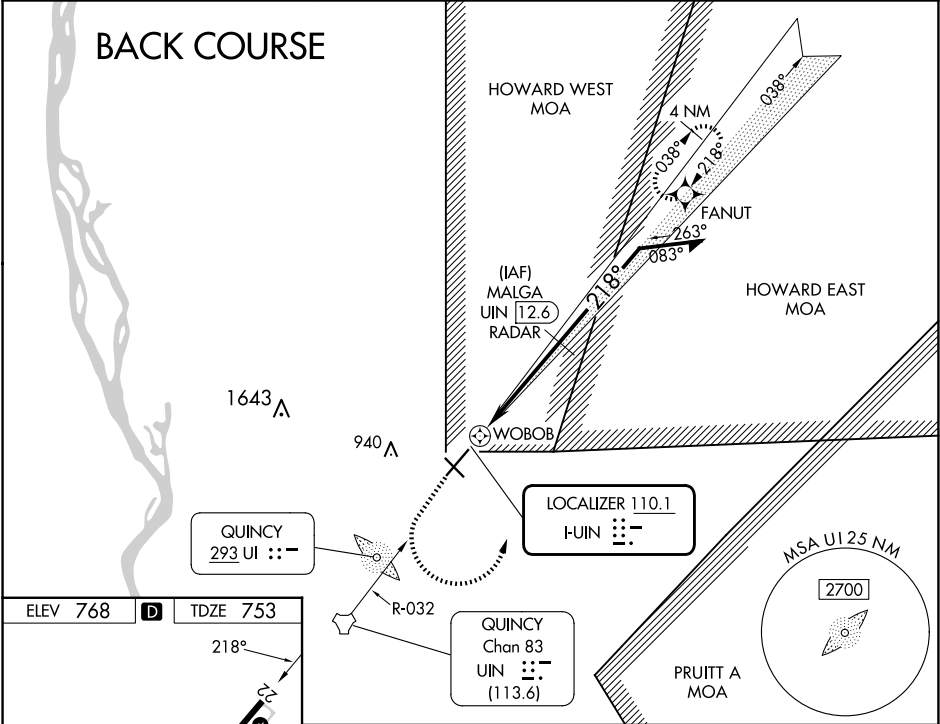
LOC BC RWY 22
QUINCY RGNL-BALDWIN FLD (UIN)

RADAR required for procedure entry at MALGA. RNP APCH - GPS.

VDP NA when using Pittsfield altimeter setting. When local altimeter setting not received, use Pittsfield altimeter setting and increase all MDAs 80 feet and S-22 visibility Cat C/D 1/8 SM. DME from UIN TACAN. DME use requires simultaneous reception of I-UIIN and UIN DME.

MISSED APPROACH: Climb to 1200 then climbing left turn to 2400 direct FANUT and hold.

ASOS 121.425	KANSAS CITY CENTER 126.225 317.775	UNICOM 123.0 (CTAF) 0
------------------------	--	---------------------------------



ELEV 768 D TDZE 753

218°

7098 X 150

5392 X 150

820

HIRL Rwy 4-22 0

MIRL Rwy 13-31 0

REIL Rwy 22 0

FAC to MAP 4.4 NM

Knots	60	90	120	150	180
Min:Sec	4:24	2:56	2:12	1:46	1:28

1200 2400 FANUT

UIN 8.8

WOBBOB

MALGA UIN 12.6

038°

218°

2400

3.00° TCH 46

0.7 0.6 3.8 NM

Disregard GS indications.

CATEGORY	A	B	C	D
S-22	1180-1 427 (500-1)		1180-1¼ 427 (500-1¼)	
CIRCLING	1180-1 412 (500-1)	1220-1 452 (500-1)	1240-1½ 472 (500-1½)	1320-2 552 (600-2)

EC-3, 10 JUL 2025 to 07 AUG 2025

EC-3, 10 JUL 2025 to 07 AUG 2025