

LOC I- <b>UIN</b> <b>110.1</b>	APP CRS <b>038°</b>	Rwy Idg TDZE Apt Elev	<b>7098</b> <b>763</b> <b>768</b>
-----------------------------------	------------------------	-----------------------------	---

ILS or LOC RWY 4

QUINCY RGNL-BALDWIN FLD (UIN)

ADF required.  
RADAR required for procedure entry at RAYOK.

▼

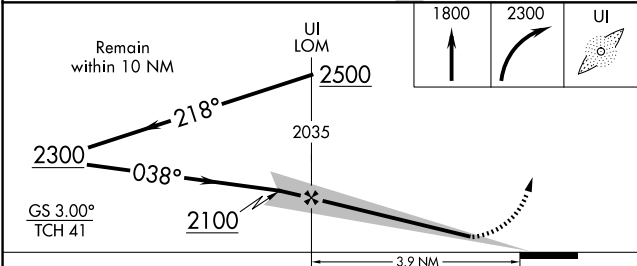
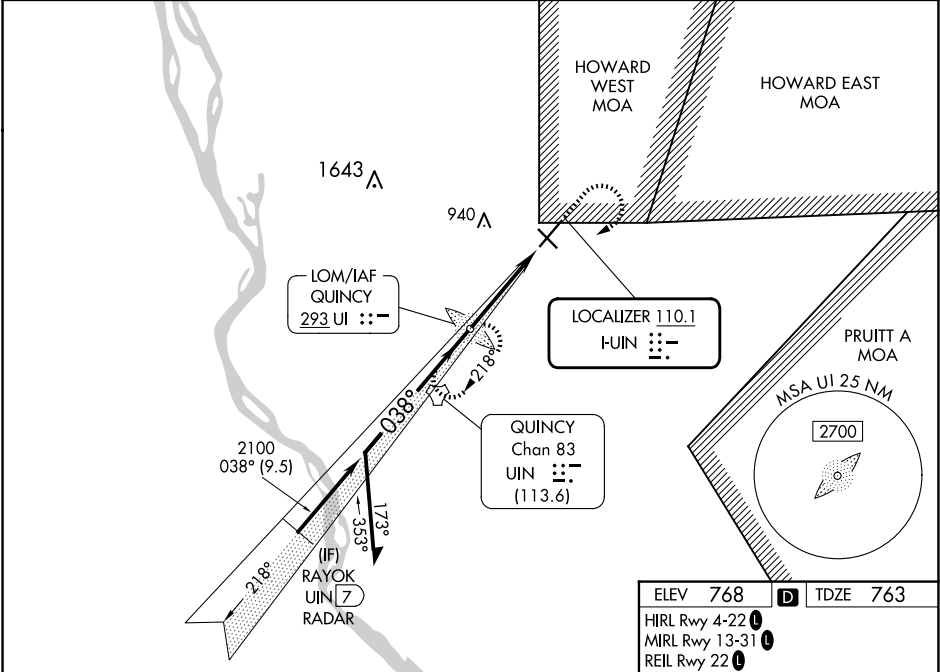
NA

DME from UIN TACAN. DME use requires simultaneous reception of I-UIN and UIN TACAN. When local altimeter setting not received, use Pittsfield altimeter setting and increase S-ILS 04 DA to 1033 feet; increase all MDAs 80 feet and S-LOC 04 visibility Cat C/D ¾ SM. For inop ALS when local altimeter not received, increase S-ILS 4 all Cats visibility to ¾ SM and S-LOC 4 Cat C and D visibility to 1 ¾ SM.

MALSR

MISSED APPROACH: Climb to 1800 then climbing right turn to 2300 direct QUINCY LOM and hold.

ASOS <b>121.425</b>	KANSAS CITY CENTER <b>126.225 317.775</b>	UNICOM <b>123.0 (CTAF) 1</b>
------------------------	--	---------------------------------



ELEV 768	TDZE 763
HIRL Rwy 4-22	
MIRL Rwy 13-31	
REIL Rwy 22	

1800

2300

UI

22

13

7098 X 150

5392 X 150

820

038°

FAF to MAP 3.9 NM					
Knots	60	90	120	150	180
Min:Sec	3:54	2:36	1:57	1:34	1:18

CATEGORY	A	B	C	D
S-ILS 4	963-½ 200 (200-½)			
S-LOC 4	1160-½ 397 (400-½)	1160-⅝ 397 (400-⅝)		
CIRCLING	1180-1 412 (500-1)	1220-1 452 (500-1)	1240-1½ 472 (500-1½)	1320-2 552 (600-2)

EC-3, 10 JUL 2025 to 07 AUG 2025

EC-3, 10 JUL 2025 to 07 AUG 2025