

LOC I-JXN
109.1

APP CRS
254°

Rwy Idg
TDZE
Apt Elev
5351
996
1001

ILS or LOC RWY 25
JACKSON COUNTY/REYNOLDS FLD (JXN)

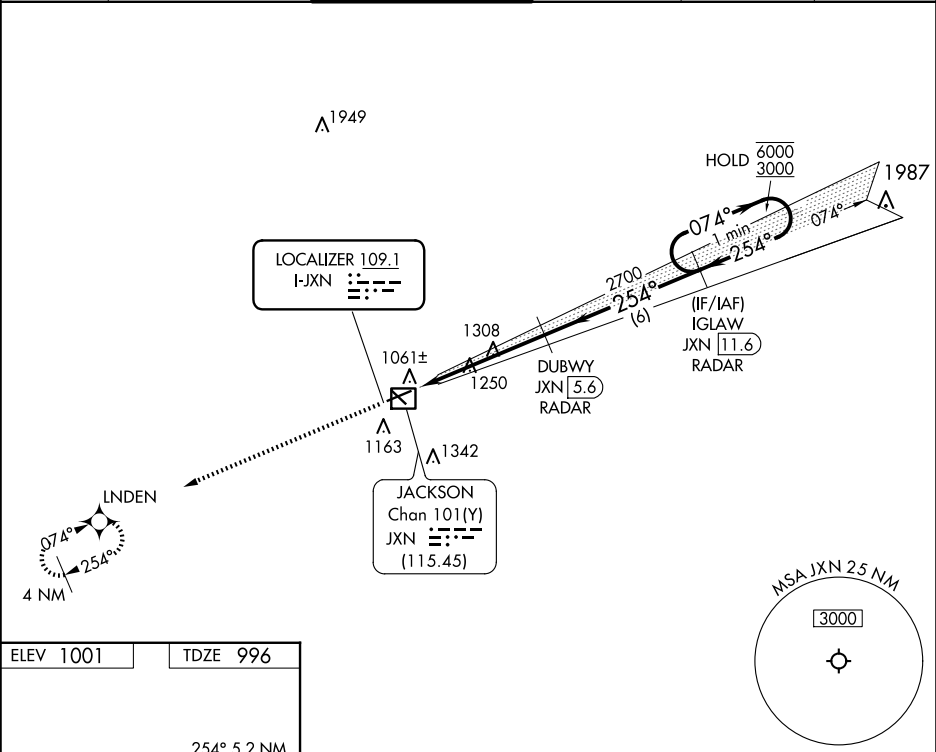
RNAV-1 GPS required. RADAR required for procedure entry.
DME or RADAR required.

MALSR

MISSED APPROACH: Climb to 3000 direct LNDEN and hold.

For inop ALS, increase S-LOC 25 Cat C/D visibility to 1¾ SM.

ATIS 125.725	GREAT LAKES APP CON ★ 127.3 335.575	JACKSON TOWER ★ 128.475 (CTAF) 0 257.8	GND CON 121.9	CLNC DEL 121.9	UNICOM 122.95
------------------------	---	---	-------------------------	--------------------------	-------------------------



ELEV 1001

TDZE 996

254° 5.2 NM from FAF

4000 X 100

5351 X 100

TWR 1063

32

HIRL Rwy 7-25

MIRL Rwy 14-32

REIL Rwys 7 and 32

FAF to MAP 5.2 NM

Knots	60	90	120	150	180
Min:Sec	5:12	3:28	2:36	2:05	1:44

3000

LNDEN

*LOC only.

JXN 2.1

JXN 0.4

DUBWY JXN (5.6) RADAR

2700

IGLAW JXN (11.6) RADAR

074°

254°

6000

3000

GS 3.00°

TCH 45

1 Minute Holding Pattern

1.8

3.4 NM

6 NM

CATEGORY	A	B	C	D
S-ILS 25	1196-½ 200 (200-½)			
S-LOC 25	1620-½	624 (700-½)	1620-1¾	624 (700-1¾)
CIRCLING	1620-1	619 (700-1)	1660-1¾	1660-2
			659 (700-1¾)	659 (700-2)