

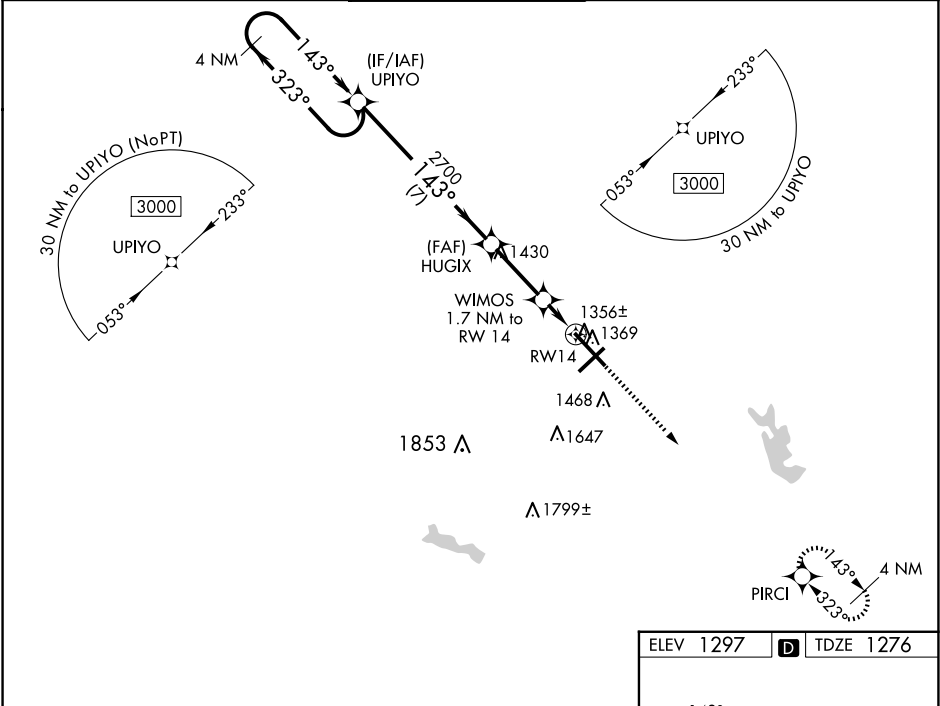
WAAS CH 53426 W14A	APP CRS 143°	Rwy Idg TDZE 1276 Apt Elev 1297
--	------------------------	---

RNAV (GPS) RWY 14
MANSFIELD LAHM RGNL (MFD)

⚠ For uncompensated Baro-VNAV systems, LNAV/VNAV NA below -18°C (0°F) or above 36°C (96°F). When local altimeter not received, use Marion altimeter setting and increase all DA 107 feet and all MDA 120 feet, and LPV all Cats visibility to 1 SM, LNAV/VNAV all Cats, and LNAV Cat C/D to 1 3⁄8 SM. Increase Circling Cat C/D visibility 1⁄2 SM. VDP and Baro-VNAV NA when using Marion altimeter setting.

MISSED APPROACH:
Climb to 3000 direct PIRCI and hold.

ATIS 125.3	CLEVELAND APP CON ★ 128.35 360.65	MANSFIELD TOWER ★ 119.8 (CTAF) 291.775	GND CON 121.8 291.775	UNICOM 122.95
----------------------	---	--	---------------------------------	-------------------------



4 NM Holding Pattern UPIYO					3000	PIRCI
GP 3.00° TCH 42					*LNAV only.	
7 NM 2.7 NM 0.7 NM 1 NM					*1 NM to RWY 14	
CATEGORY	A	B	C	D		
LPV DA	1476-3⁄4 200 (200-3⁄4)					
LNAV/VNAV DA	1557-7⁄8 281 (300-7⁄8)					
LNAV MDA	1620-1 344 (400-1)					
C CIRCLING	1760-1	463 (500-1)	2000-2 703 (800-2)	2000-2 1⁄4 703 (800-2 1⁄4)		

