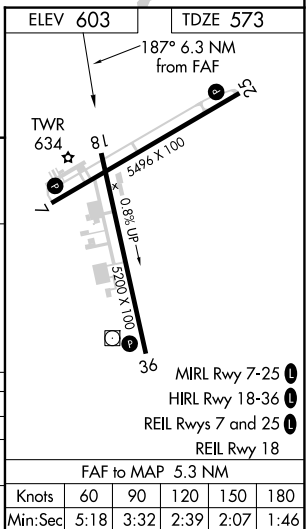
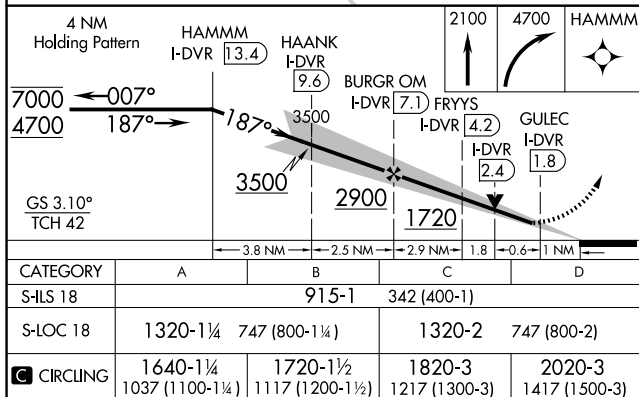
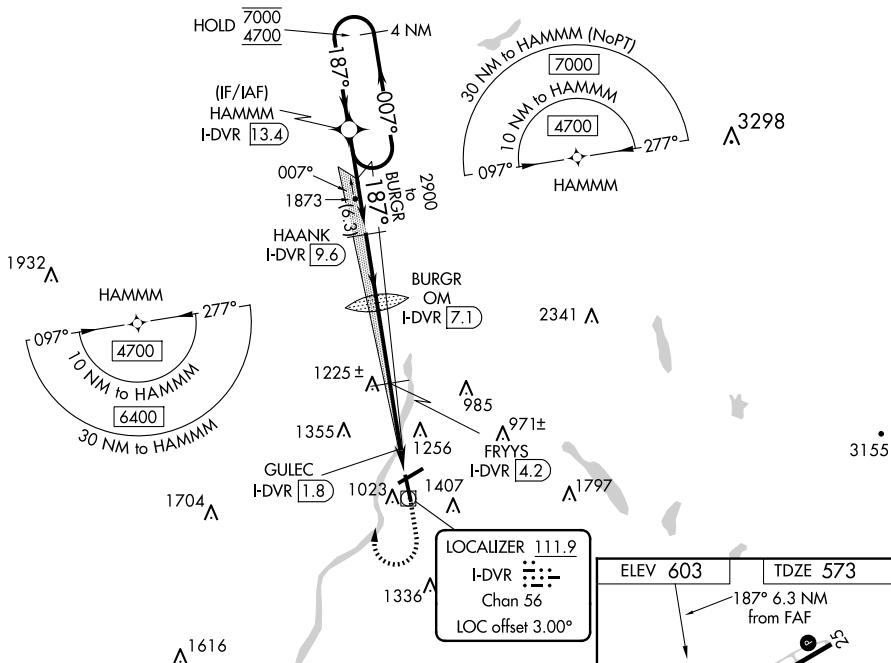


ILS or LOC RWY 18  
LEBANON MUNI (LEB)

**MISSED APPROACH:** Climb to 2100 then climbing right turn to 4700 direct HAMMM and hold, continue climb-in-hold to 4700.

Autopilot coupled approach NA below 750.

ATIS <b>118.65</b>	BOSTON CENTER <b>134.7 269.475</b>	LEBANON TOWER ★ <b>125.95 (CTAF) 0 235.775</b>	GND CON <b>121.6</b>	UNICOM <b>122.95</b>
-----------------------	---------------------------------------	---	-------------------------	-------------------------



NE-1, 10 JUL 2025 to 07 AUG 2025