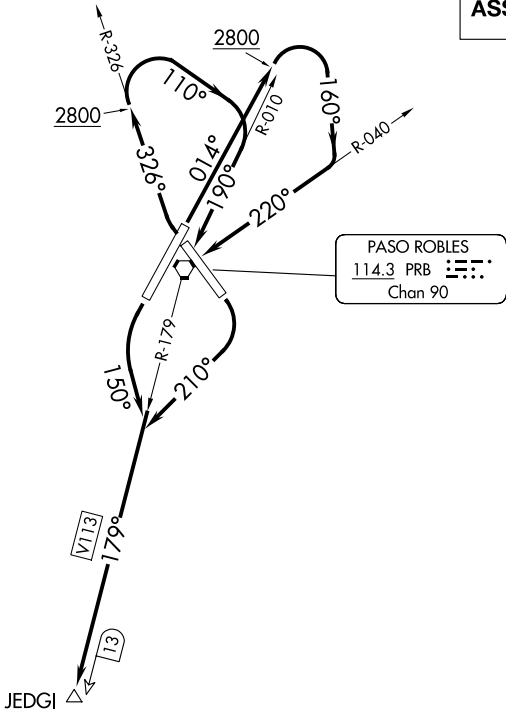


OAKLAND CENTER
128.7 307.0

DME required.

TOP ALTITUDE:
ASSIGNED BY ATC



TAKEOFF MINIMUMS
Rwy 1: Standard with minimum climb of 230' per NM to 2200.
Rwy 13: Standard with minimum climb of 220' per NM to 1700.
Rwy 19: Standard.
Rwy 31: Standard with minimum climb of 235' per NM to 2200.

NOTE: Chart not to scale.



DEPARTURE ROUTE DESCRIPTION

TAKEOFF RUNWAY 1: Climb on heading 014° to 2800 then climbing right turn heading 160° to intercept PRB VORTAC R-040 to PRB VORTAC, then PRB VORTAC R-179 to JEDGI/PRB 13 DME, thence. . . .

TAKEOFF RUNWAY 13: Climbing right turn to heading 210° to intercept PRB VORTAC R-179 to JEDGI/PRB 13 DME, thence. . . .

TAKEOFF RUNWAY 19: Climbing left turn heading to 150° to intercept PRB VORTAC R-179 to JEDGI/PRB 13 DME, thence. . . .

TAKEOFF RUNWAY 31: Climbing right turn to intercept PRB VORTAC R-326 to 2800 then climbing right turn to heading 110° to intercept PRB VORTAC R-010 to PRB VORTAC, then PRB VORTAC R-179 to JEDGI/PRB 13 DME, thence. . . .

. . . maintain ATC assigned altitude; expect clearance to filed altitude 10 minutes after departure.

SW-3, 10 JUL 2025 to 07 AUG 2025

SW-3, 10 JUL 2025 to 07 AUG 2025