

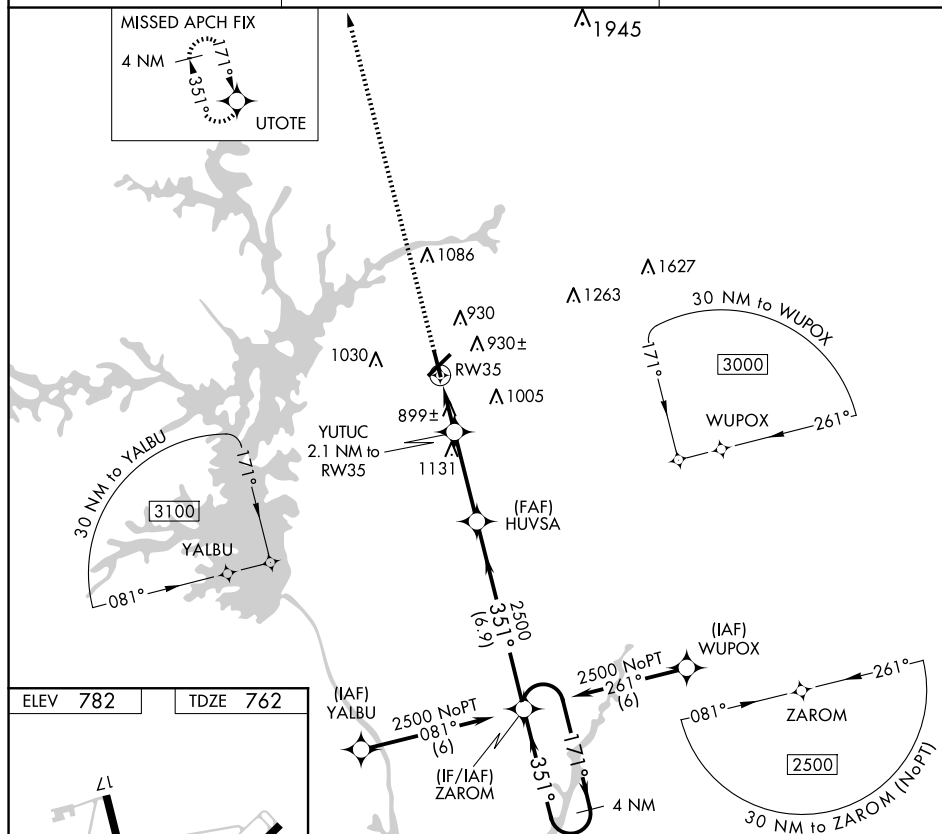
WAAS CH <b>93734</b> <b>W35A</b>	APP CRS <b>351°</b>	Rwy Idg <b>4996</b> TDZE <b>762</b> Apt Elev <b>782</b>
--	------------------------	---

RNAV (GPS) RWY 35  
ANDERSON RGNL (AND)

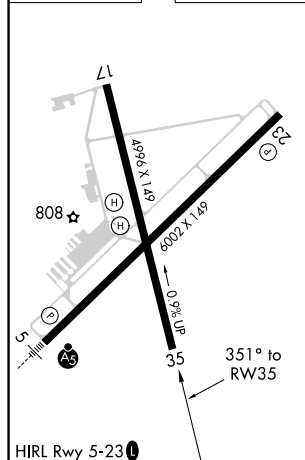
**T** DME/DME RNP-0.3 NA. When local altimeter setting not received, use Clemons altimeter setting and increase all MDA 60 feet; increase all Cats C and D visibility  $\frac{1}{4}$  mile. Straight-in **A** Rwy 35 NA at night, Circling Rwy 17, 35 NA at night. Rwy 17, 35 helicopter visibility reduction below  $\uparrow$  SM NA.

**MISSED APPROACH:**  
Climb to 3200 direct  
UTOTE and hold.

ASOS <b>120.675</b>	GREER APP CON ★ <b>118.8 270.275</b>	CTAF <b>123.6</b>
------------------------	---	----------------------



ELEV 782		TDZE 762
----------	--	----------



Visual Segment - Obstacles.

4 NM Holding Pattern

UTOTE

HUVSA

ZAROM

YUTUC 2.1 NM to RW35

RW35

1440

2500

351°

171°

2500

2.1 NM

3.3 NM

6.9 NM

CATEGORY	A	B	C	D
LP MDA	1160-1	398 (400-1)	1160-1 $\frac{1}{8}$	398 (400-1 $\frac{1}{8}$ )
LPNAV MDA	1180-1	418 (400-1)	1180-1 $\frac{1}{8}$	418 (400-1 $\frac{1}{8}$ )
<b>C</b> CIRCLING	1260-1 478 (500-1)	1320-1 538 (600-1)	1440-1 $\frac{3}{4}$ 658 (700-1 $\frac{3}{4}$ )	1500-2 $\frac{1}{4}$ 718 (800-2 $\frac{1}{4}$ )