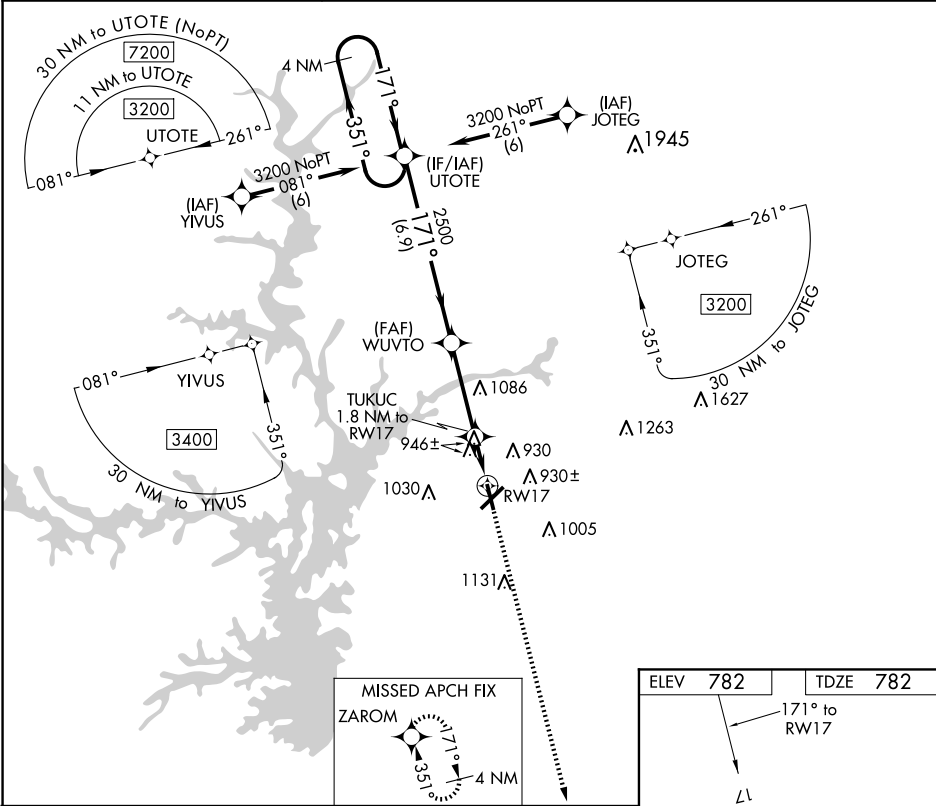


WAAS CH <b>49034</b> <b>W17A</b>	APP CRS <b>171°</b>	Rwy Idg TDZE <b>782</b> Apt Elev <b>782</b>
--	------------------------	---

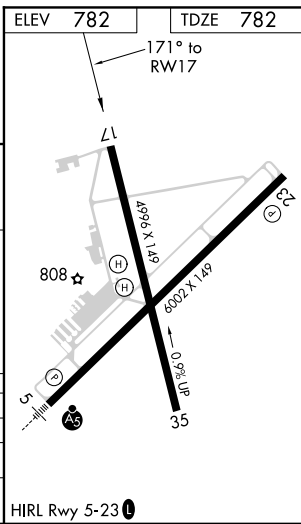
RNAV (GPS) RWY 17  
ANDERSON RGNL (AND)

<p><b>▼</b> DME/DME RNP-0.3 NA. When local altimeter setting not received, use Clemson altimeter setting and increase all MDA 60 feet and increase LP, LNAV and Circling Cts C/D visibility ¼ mile.</p> <p><b>▲</b> Straight-in Rwy 17 NA at night, Circling Rwy 17, 35 NA at night. 17, 35 helicopter visibility reduction below 1 SM NA.</p>	<p><b>MISSED APPROACH:</b> Climb to 2500 direct ZAROM and hold.</p>
--	---

ASOS <b>120.675</b>	GREER APP CON ★ <b>118.8 270.275</b>	CTAF <b>123.60</b>
------------------------	---	-----------------------



4 NM Holding Pattern					2500		ZAROM	
UTOTE					↑		✦	
3200 ← 351°					171° →		171°	
					WUVTO		TUKUC	
					3.00° TCH 45		1.8 NM to RW17	
					2500		RW17	
					1400			
					6.9 NM		3.5 NM	
					1.8 NM			
CATEGORY	A	B	C	D				
LP MDA	1200-1	418 (500-1)	1200-1½	418 (500-1½)				
LNAV MDA	1220-1	438 (500-1)	1220-1¼	438 (500-1¼)				
CIRCLING	1260-1 478 (500-1)	1320-1 538 (600-1)	1440-1¾ 658 (700-1¾)	1500-2¼ 718 (800-2¼)				



SE-2, 10 JUL 2025 to 07 AUG 2025

SE-2, 10 JUL 2025 to 07 AUG 2025