

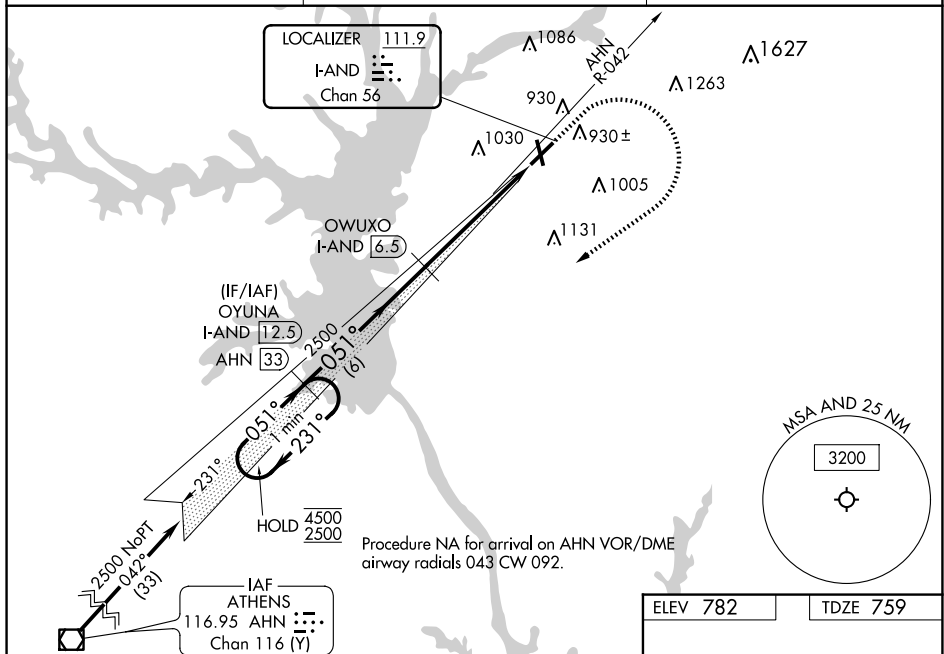
ILS or LOC RWY 5
ANDERSON RGNL (AND)

T When local altimeter setting not received, use Clemson altimeter setting and increase S-ILS 05 DA to 1006 feet; increase all MDAs 60 feet and Circling visibility Cat C/D $\frac{1}{4}$ SM. VDP NA when using Clemson altimeter setting. Circling Rwy 17, 35 NA at night.

A For inop ALS increase S-LOC 05 visibility Cat C/D to $1\frac{3}{8}$ SM.



MISSED APPROACH: Climb to 1600 then climbing right turn to 2500 on heading 240° and on AHN VOR/DME R-042 to OYUNA/I-AND 12.5 DME and hold.

CTAF
123.6 L

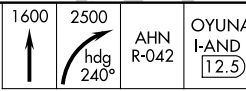
Procedure NA for arrival on AHN VOR/DME
airway radials 043 CW 092.

ELEV 782		TDZE 759
----------	--	----------

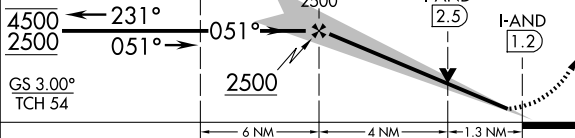
VGSI and ILS glidepath not coincident
(VGSI Angle 3.00/TCH 49).


One Minute Holding Pattern

OYUNA
I-AND 12.5

OWUXO
I-AND 6.5

125



CATEGORY	A	B	C	D
S-ILS 5	959- $\frac{1}{2}$ 200 (200- $\frac{1}{2}$)			
S-LOC 5	1220- $\frac{1}{2}$	461 (500- $\frac{1}{2}$)	1220-1	461 (500-1)
 CIRCLING	1260-1 478 (500-1)	1320-1 538 (600-1)	1440-1 $\frac{3}{4}$ 658 (700-1 $\frac{3}{4}$)	1500-2 $\frac{1}{4}$ 718 (800-2 $\frac{1}{4}$)

