

|  |                        |                             |   |
|--|------------------------|-----------------------------|---|
| WAAS<br>CH <b>99704</b><br><b>W35A</b> | APP CRS<br><b>347°</b> | Rwy Ldg<br>TDZE<br>Apt Elev | <b>5000</b><br><b>1864</b><br><b>1864</b> |
|--|------------------------|-----------------------------|---|

RNAV (GPS) RWY 35  
RUSSELL MUNI (RSL)

RUSSELL MUNI (RSL)

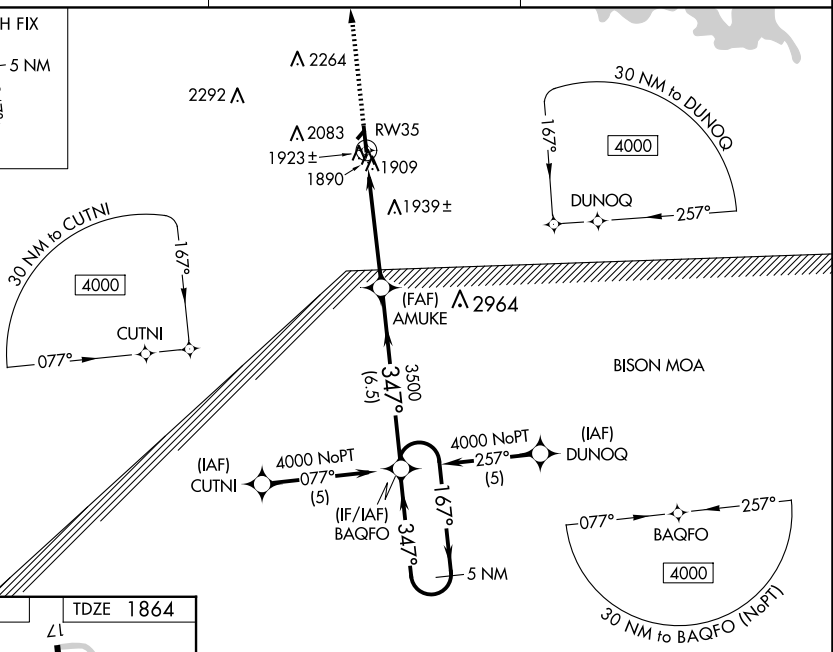


Baro-VNAV NA when using Hays alimeter setting. For uncompensated Baro-VNAV systems, LNAV/VNAV NA below -18°C (0°F) or above 54°C (130°F). DME/DTE RNP-0.3 NA. VDP NA when using Hays alimeter setting. When local alimeter setting not received, use Hays alimeter setting: increase LPV all Cats DA to 2187 feet, LNAV/VNAV all Cats DA to 2267 feet and all visibilities ¼ SM; increase all MDA 80 feet, LNAV Cat C visibility ⅓ SM and Circling Cat C visibility ¼ SM. Circling NA to Rwy3 S and 21.

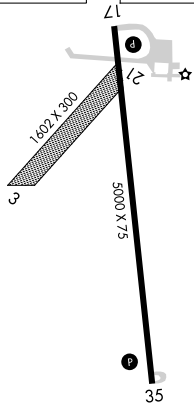
**MISSED APPROACH:**  
Climb to 4000 direct  
EDITE and hold.

|                        |  |                                 |
|------------------------|--|---------------------------------|
| ASOS<br><b>128,325</b> | KANSAS CITY CENTER<br><b>124.4 322.4</b> | UNICOM<br><b>122.7 (CTAF) 0</b> |
|------------------------|--|---------------------------------|

MISSED APCH FIX



|           |  |           |
|-----------|--|-----------|
| ELEV 1864 |  | TDZE 1864 |
|-----------|--|-----------|



REIL Rwy 17 and 35 L

MIRL Rwy 17-35 **L**

Orig-B 04NOV21

Orig-B 04NOV21

38°52'N-98°49'W

RUSSELL MUNI (RSL)

RNAV (GPS) RWY 35