

WAAS
CH **78441**
W01A

APP CRS
007°

Rwy Ldg
TDZE **636**
Apt Elev **644**

RNAV (GPS) RWY 1

RICHARD B RUSSELL RGNL - J H TOWERS FLD (RMG)

RNP APCH - GPS.

▼

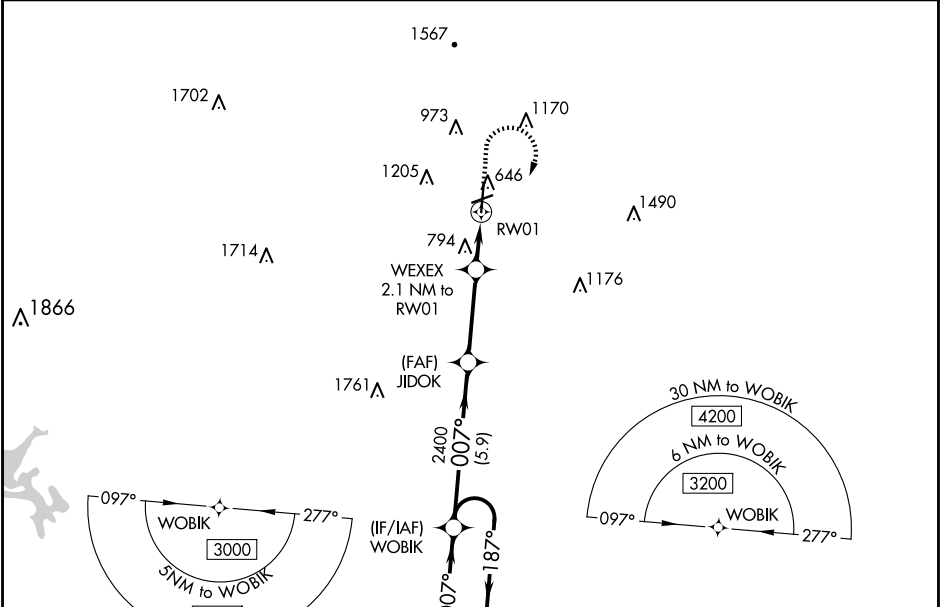
⚠

Rwy 1 helicopter visibility reduction below $\frac{3}{4}$ SM NA. For uncompensated Baro-VNAV systems, LNAV/VNAV NA below -7°C or above 54°C. Circling NA west of Rwy 1-19 at night. Circling NA northwest of Rwy 7 and 19. For inop ALS, increase LPV all Cats visibility to $\frac{1}{2}$ SM, LNAV/VNAV all Cats visibility to 1 SM, LNAV Cats A/B visibility to 1 SM, and LNAV Cats C/D visibility to $1\frac{1}{2}$ SM.

MALSR

MISSED APPROACH:
Climb to 1200 then
climbing right turn to
3000 direct WOBIK
and hold.

ASOS 119.925	ATLANTA CENTER 124.5 270.325	GCO 121.725	UNICOM 122.725 (CTAF) 0
------------------------	--	-----------------------	-----------------------------------



4 NM Holding Pattern WOBIK

GP 3.00
TCH 49

10000
3000

187°

007°

007°

2400

1340

5.9 NM

3.3 NM

0.8 NM

1.3 NM

1200

3000

WOBIK

JIDOK

WEXEX

2.1 NM to RW01

1.3 NM to RW01

RW01

CATEGORY	A	B	C	D
LPV DA		941- $\frac{3}{4}$	305 (300- $\frac{3}{4}$)	
LNAV/VNAV DA		980- $\frac{3}{4}$	344 (400- $\frac{3}{4}$)	
LNAV MDA	1100- $\frac{3}{4}$	464 (500- $\frac{3}{4}$)	1100-1	464 (500-1)
CIRCLING	1140-1 496 (500-1)	1200-1 556 (600-1)	1480-2 $\frac{1}{2}$ 836 (900-2 $\frac{1}{2}$)	1840-3 1196 (1200-3)

ELEV 644

D

TDZE 636

61

0.4% UP

25

4498 X 100

7010 X 150

007°

HIRL Rwy 1-19 0