

VOR/DME OTB 109.8 Chan 35	APP CRS 196°	Rwy Idg 7150 TDZE 344 Apt Elev 347
---	------------------------	---

VOR RWY 18
TUPELO RGNL (TUP)

RADAR required for procedure entry. DME required.

T When local altimeter setting not received, use Columbus AFB altimeter setting and increase all MDA 120 feet. Increase S-18 Cat C/D visibility $\frac{3}{8}$ SM; increase Circling Cat C/D visibility $\frac{1}{2}$ SM. VDP NA when using Columbus AFB altimeter setting.

MISSED APPROACH: Climb to 1500 then climbing right turn to 3000 on OTB VOR/DME R-016 to PYLIP/OTB 8.6 DME and hold.

ASOS 133.525	MEMPHIS CENTER 128.5 279.55	TUPELO TOWER ★ 118.775 (CTAF) 0 254.275	GND CON 121.825 254.275
------------------------	---------------------------------------	---	-----------------------------------

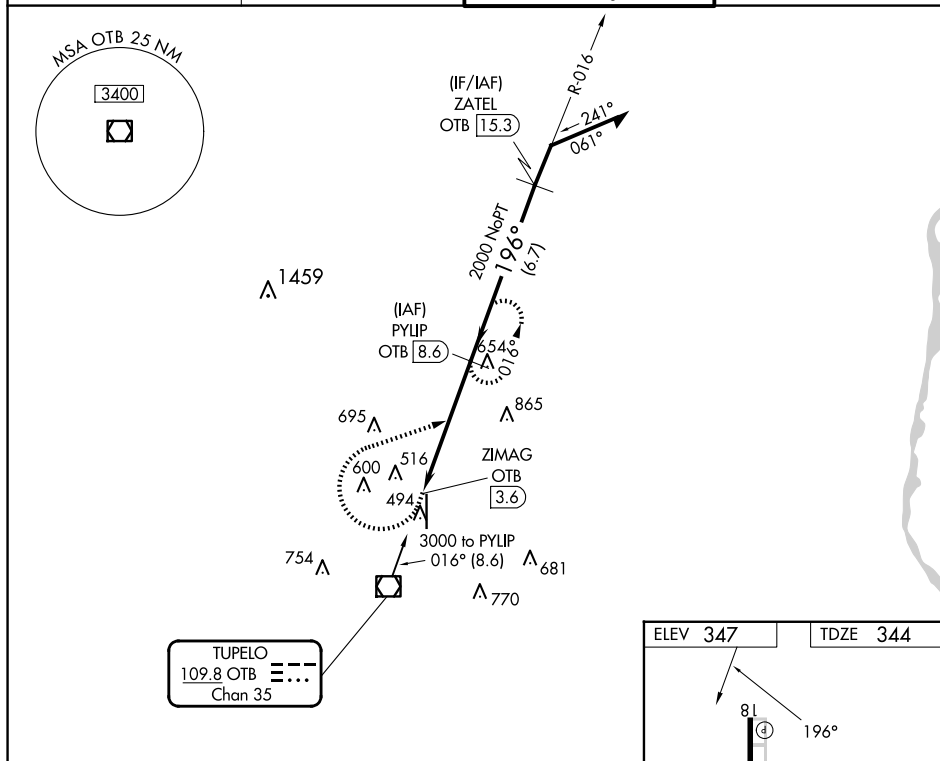


Diagram illustrating a flight path with altitude and course corrections:

- Initial altitude: 1500
- Altitude change: 3000
- OTB R-016
- PYLIP OTB 8.6
- ZIMAG OTB 3.6
- OTB 4.8
- Altitude change: 2000
- Altitude change: 2200
- Course correction: $\leq 3.01^\circ$ TCH 45
- Altitude change: 016°
- Altitude change: 196°
- Note: Remain within 10 NM

CATEGORY	A	B	C	D
S-18	780-1	436 (500-1)	780-1¼	436 (500-1¼)
C CIRCLING	820-1	473 (500-1)	900-1½ 553 (600-1½)	1140-2½ 793 (800-2½)

