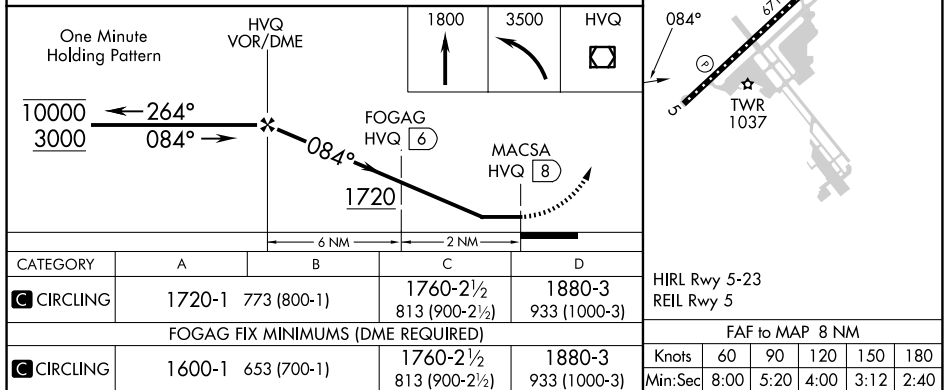
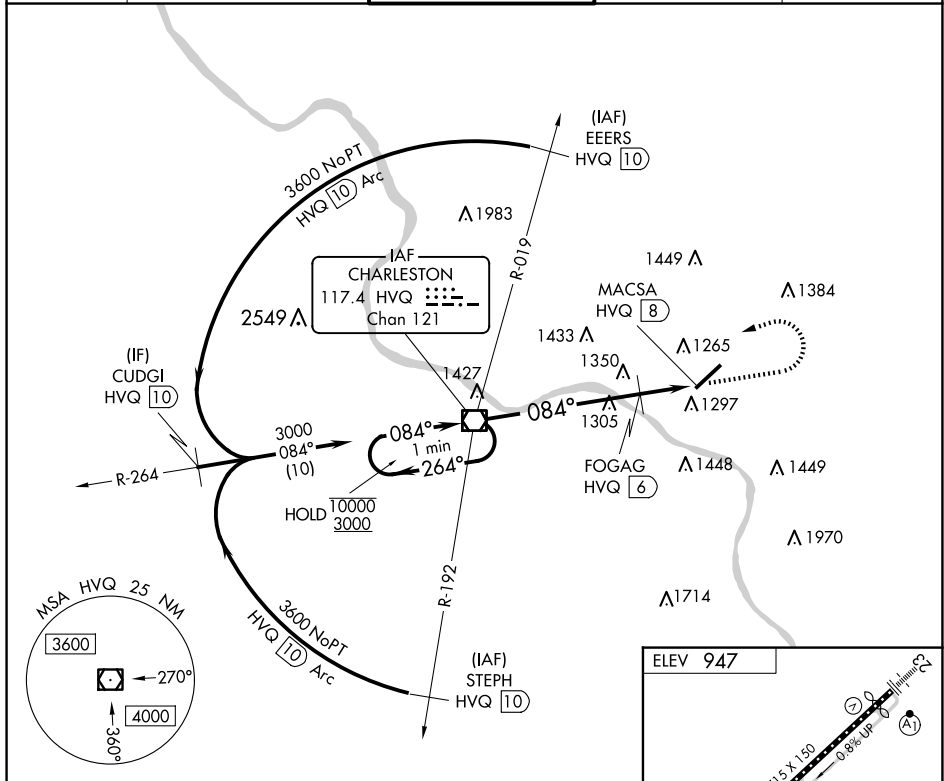


VOR-A  
WEST VIRGINIA INTL YEAGER (CRW)

**MISSED APPROACH:** Climb to 1800 then climbing left turn to 3500 direct HVQ VOR/DME and hold.

ATIS 127.6	CHARLESTON APP CON 124.1 269.125	CHARLESTON TOWER 125.7 257.8	GND CON 121.8 348.6	CLNC DEL 118.55
---------------	-------------------------------------	---------------------------------	------------------------	--------------------



NE-4, 10 JUL 2025 to 07 AUG 2025

NE-4. 10 JUL 2025 to 07 AUG 2025