

LOC/DME I-HCV	APP CRS	Rwy Idg	6215
110.3	052°	TDZE	947
Chan 40		Apt Elev	947

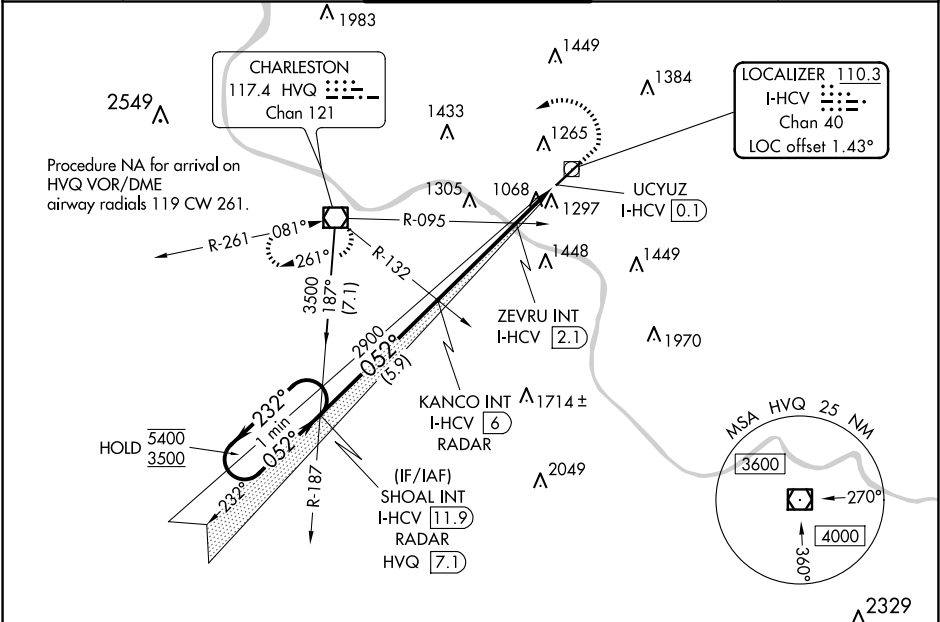
ILS or LOC RWY 5

WEST VIRGINIA INTL YEAGER (CRW)

Autopilot coupled approach NA below 1300.

MISSED APPROACH: Climb to 1800 then climbing left turn to 3500 direct HVQ VOR/DME and hold.

ATIS	CHARLESTON APP CON	CHARLESTON TOWER	GND CON	CLNC DEL
127.6	124.1 269.125	125.7 257.8	121.8 348.6	118.55



<div>One Minute Holding Pattern</div> <div>5400 ← 232° 3500 → 052°</div> <div>GS 3.00° TCH 56</div>					<div>SHOAL INT I-HCV 11.9 RADAR</div> <div>2900</div> <div>5.9 NM</div>					<div>KANCO INT I-HCV 6 RADAR</div> <div>2900</div> <div>3.9 NM</div>					<div>ZEVRU INT I-HCV 2.1</div> <div>1640</div> <div>1 NM</div>					<div>1800 ↑</div> <div>3500 ↘</div> <div>HVQ</div> <div>I-HCV DME ANTENNA</div> <div>I-HCV UCYUZ 1.1</div> <div>I-HCV 0.1</div> <div>0.1 NM</div>				
CATEGORY		A		B		C		D																
S-ILS 5		1197/40										250 (300-¾)												
S-LOC 5		1640/55		693 (700-1)				1640-2		693 (700-2)														
CIRCLING		1640-1		693 (700-1)				1760-2½ 813 (900-2½)		1880-3 933 (1000-3)														
ZEVRU FIX MINIMUMS (DUAL VOR RECEIVERS OR DME REQUIRED)																								
S-LOC 5		1320/55				373 (400-1)																		
CIRCLING		1600-1		653 (700-1)				1760-2½ 813 (900-2½)		1880-3 933 (1000-3)														

ELEV 947

D

TDZE 947

6715 x 150

0.8% UP

TWR 1037

052°