
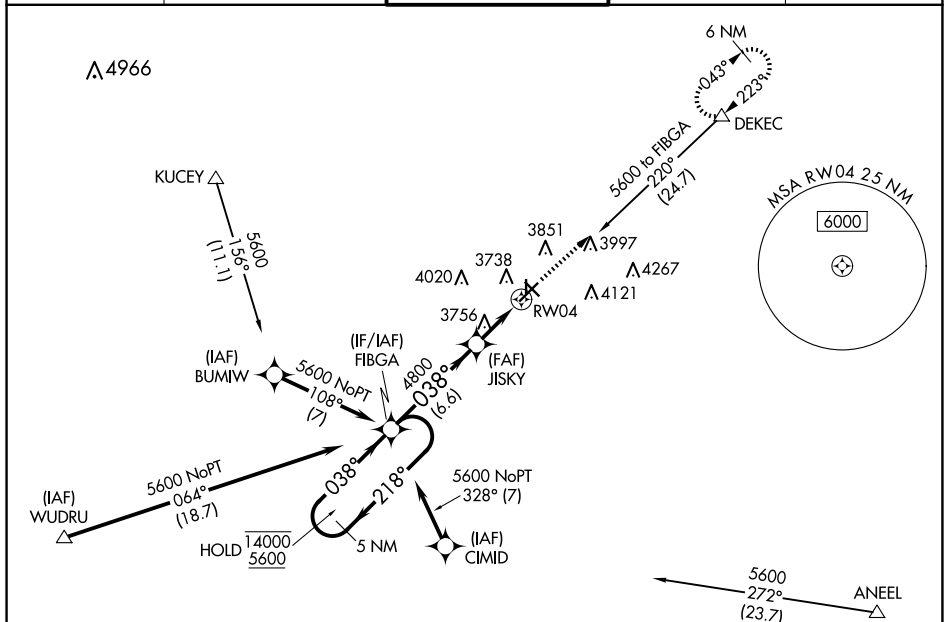


WAAS CH <b>90215</b> <b>W04A</b>	APP CRS <b>038°</b>	Rwy Ldg <b>7398</b> TDZE <b>3652</b> Apt Elev <b>3661</b>
--	------------------------	---

## RNAV (GPS) RWY 4

LEA COUNTY RGNL (HOB)

RNP APCH - GPS.			MALSR 	MISSED APPROACH: Climb to 4200 then climb to 6000 direct DEKEC and hold.	
⚠ Circling Rwy 17, 35 NA at night. For uncompensated Baro-VNAV systems, LNAV/VNAV NA below -12°C or above 54°C. For inop ALS increase LNAV/VNAV all Cats visibility to ¾ SM and LNAV Cats C/D visibility to 1 SM.					
ATIS <b>119.75</b>	FORT WORTH CENTER <b>133.1 298.95</b>	HOBBS TOWER ★ <b>120.65 (CTAF) 0 317.4</b>	GND CON <b>121.9</b>	UNICOM <b>122.95</b>	



ELEV 3661	<b>D</b>	TDZE 3652
-----------	----------	-----------

