

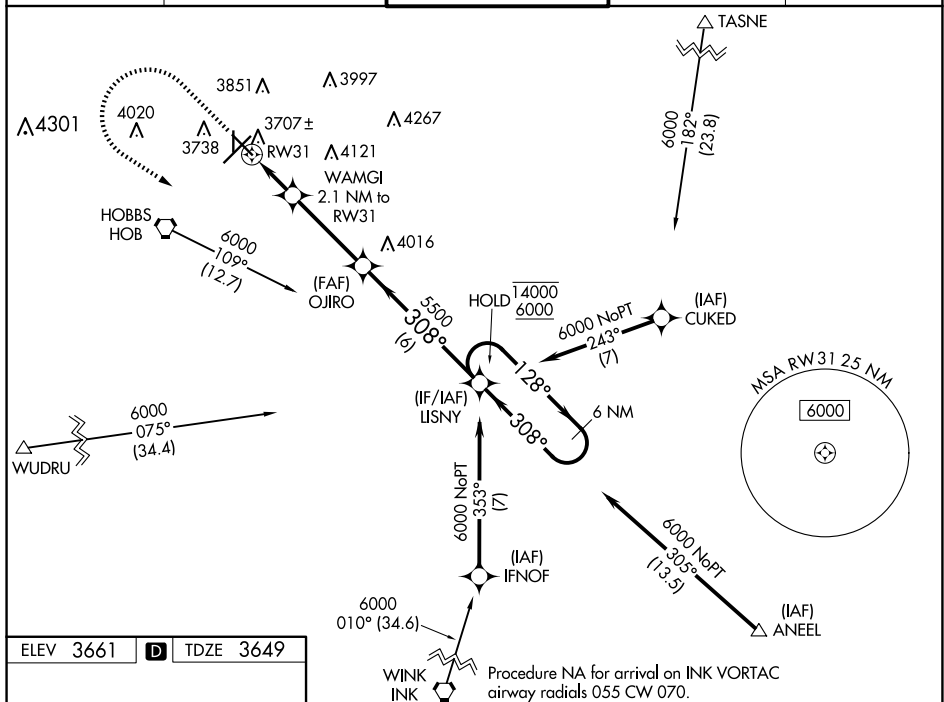
WAAS CH <b>69635</b> <b>W31A</b>	APP CRS <b>308°</b>	Rwy Ldg <b>6002</b> TDZE <b>3649</b> Apt Elev <b>3661</b>
--	------------------------	---

RNAV (GPS) RWY 31  
LEA COUNTY RGNL (HOB)

RNP APCH - GPS.

**T** Circling Rwy 17, 35 NA at night. For uncompensated Baro-VNAV  
**A** systems, LNAV/VNAV NA below -12°C or above 54°C.

ATIS <b>119.75</b>	FORT WORTH CENTER <b>133.1 298.95</b>	HOBBS TOWER ★ <b>120.65 (CTAF) 0 317.4</b>	GND CON <b>121.9</b>	UNICOM <b>122.95</b>
-----------------------	--	---	-------------------------	-------------------------

[illegible]

SW-1, 10 JUL 2025 to 07 AUG 2025