

HOBBS, NEW MEXICO

AL-851 (FAA)

25163

WAAS CH <b>82735</b> <b>W22A</b>	APP CRS <b>218°</b>	Rwy Ldg <b>8000</b> TDZE <b>3649</b> Apt Elev <b>3661</b>
--	------------------------	---

RNAV (GPS) RWY 22  
LEA COUNTY RGNL (HOB)

RNP APCH - GPS.

**T** Circling Rwy 17, 35 NA at night. For uncompensated Baro-VNAV  
**A** systems, LNAV/VNAV NA below -12°C or above 54°C.

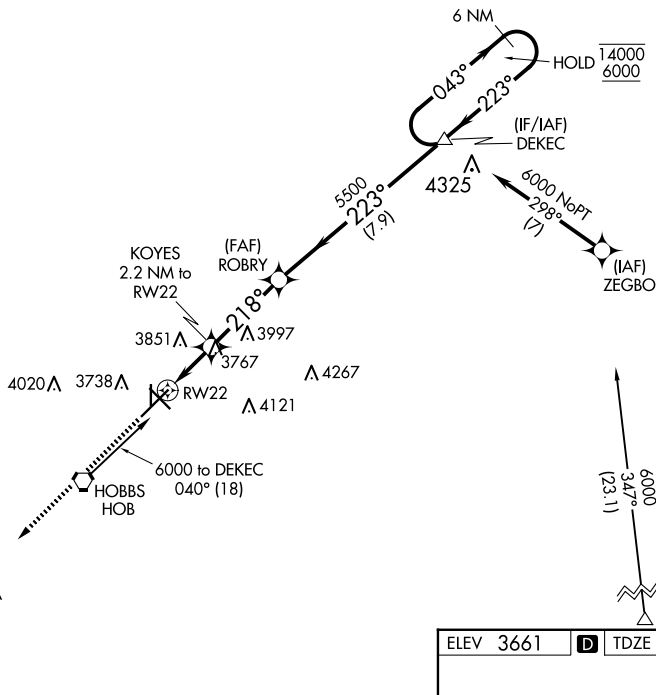
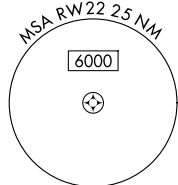
**MISSED APPROACH:** Climb to 5600 direct FIBGA and hold.

ATIS  
119.75

FORT WORTH CENTER  
133.1 298.95

HOBBS TOWER ★  
120.65 (CTAF) L 317.4

GND CON  
**121.9**

UNICOM  
122.95

5600 FIBGA

KOYES 2.2 NM to RW22

1 NM to RW22

ROBRY 5500

DEKEC

6 NM Holding Pattern

043° → 14000

← 223° 6000

218°

223°

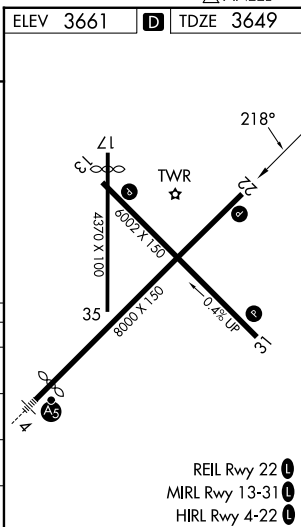
5500

4400

GP 3.00°

TCH 44

CATEGORY		A	B	C	D
LPV	DA	3899-3 <sup>3</sup> / <sub>4</sub> 250 (300-3 <sup>3</sup> / <sub>4</sub> )			
LNAV/ VNAV	DA	3899-3 <sup>3</sup> / <sub>4</sub> 250 (300-3 <sup>3</sup> / <sub>4</sub> )			
LNAV	MDA	4020-1 371 (400-1)			
<b>C</b> CIRCLING		4120-1 459 (500-1)	4160-1 499 (500-1)	4440-2 <sup>1</sup> / <sub>4</sub> 779 (800-2 <sup>1</sup> / <sub>4</sub> )	4440-2 <sup>1</sup> / <sub>2</sub> 779 (800-2 <sup>1</sup> / <sub>2</sub> )



HOBBS, NEW MEXICO  
Amdt 3 31OCT24

32°41'N-103°13'W

LEA COUNTY RGNL (HOB)  
RNAV (GPS) RWY 22

SW-1, 10 JUL 2025 to 07 AUG 2025