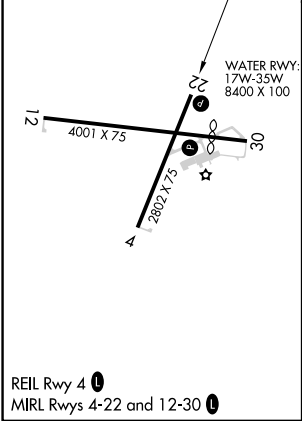
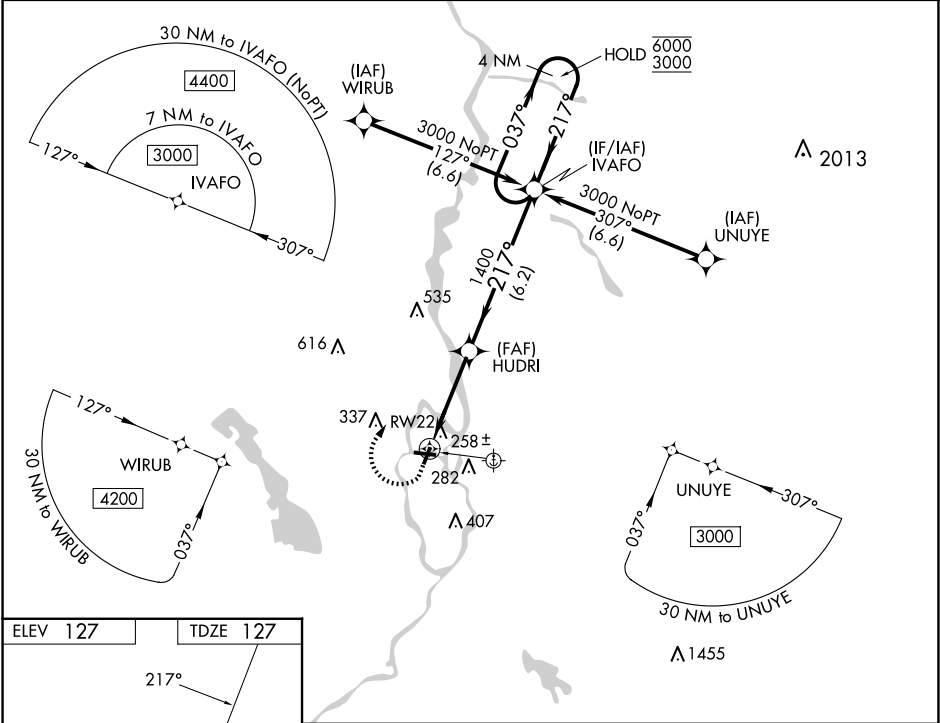


WAAS CH <b>61044</b> <b>W22A</b>	APP CRS <b>217°</b>	Rwy Idg TDZE Apt Elev	<b>2802</b> <b>127</b> <b>127</b>
--	------------------------	-----------------------------	---

RNAV (GPS) RWY 22

DEWITT FLD/OLD TOWN MUNI (OLD)

RNP APCH - GPS.		MISSED APPROACH: Climb to 700 then climbing right turn to 3000 direct IVAFO and hold, continue climb-in-hold to 3000.
Circling NA to Rwy 17W and 35W. Circling Rwy 4, 12, 22, 30 NA at night. Rwy 22 helicopter visibility reduction below 3/4 SM NA. Use Bangor Intl altimeter setting; when not received, use Bar Harbor altimeter setting and increase all MDA 60 feet and increase LPV visibility all Cats 1/8 SM.		
BGR ASOS	BANGOR APP CON	UNICOM
127.75	118.925 239.3	122.8 (CTAF) 0



700 3000 IVAFO		VGSI and RNAV glidepath not coincident (VGSI Angle 4.00/TCH 41).	
HOLDING PATTERN		4 NM Holding Pattern	
RW22		HOLDING PATTERN	
3.8 NM		6.2 NM	
CATEGORY	A	B	C
LPV DA	467-1	340 (400-1)	NA
LNVA MDA	560-1	433 (500-1)	NA
CIRCLING	640-1 513 (600-1)	700-1 573 (600-1)	NA

NE-1, 10 JUL 2025 to 07 AUG 2025

NE-1, 10 JUL 2025 to 07 AUG 2025