

VOR/DME HRL <b><u>113.65</u></b> Chan <b>83</b> (Y)	APP CRS <b>189°</b>	Rwy Ldg <b>5949</b> TDZE <b>34</b> Apt Elev <b>36</b>
---	------------------------	---

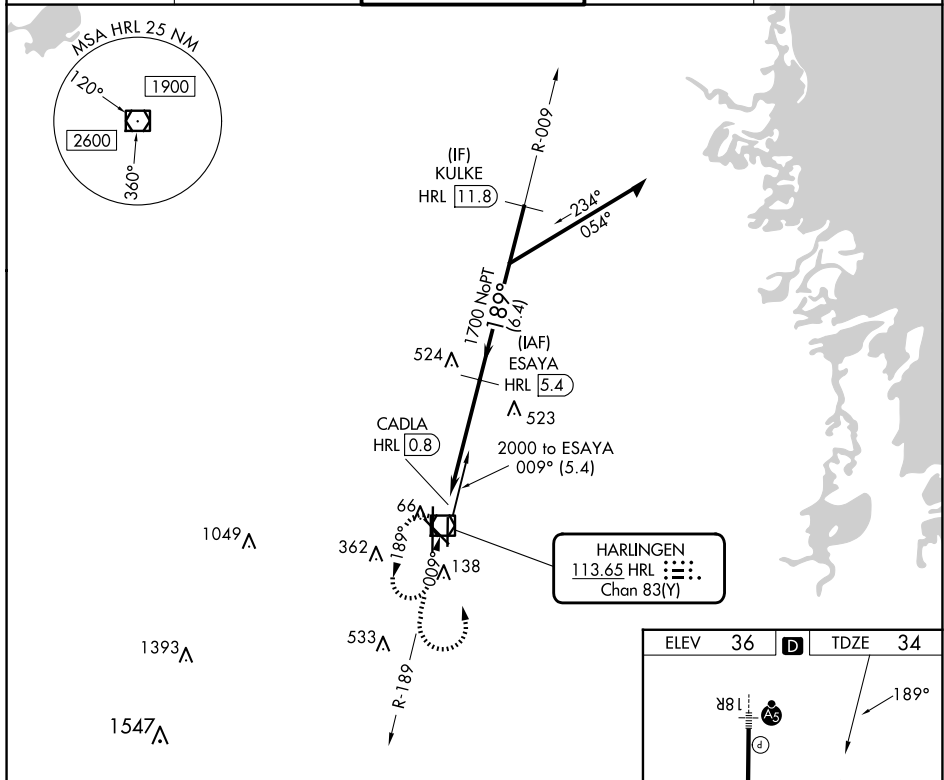
VOR RWY 18L  
VALLEY INTL (HRL)

DME required. RADAR required for procedure entry at KULKE.

**T** VDP NA when using Port Isabel altimeter setting. When local altimeter  
**A** setting not received, use Port Isabel altimeter setting and increase all  
 MDAs 60 feet and Circling visibility Cats C and D  $\frac{1}{4}$  SM.

**MISSED APPROACH:** Climb to 2100 then left turn direct HRL VOR/DME and hold.

ATIS <b>124.85</b>	VALLEY APP CON <b>120.7 279.5</b>	HARLINGEN TOWER ★ <b>119.3(CTAF) 0 317.6</b>	GND CON <b>121.7</b>	UNICOM <b>122.95</b>
-----------------------	--------------------------------------	---	-------------------------	-------------------------



MIRL Rwy 18L-36R  
REIL Rwys 13 and 18L  
HIRL Rwys 13-31 and 18R-36L