

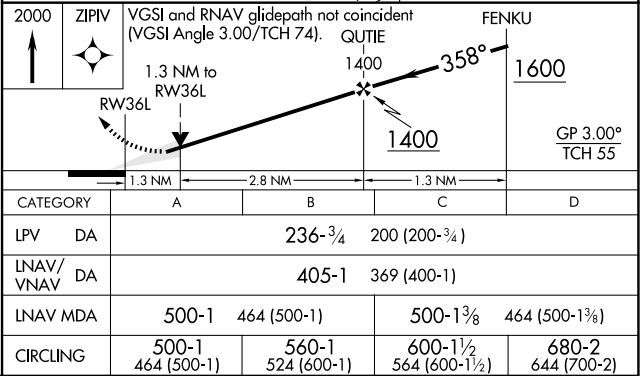
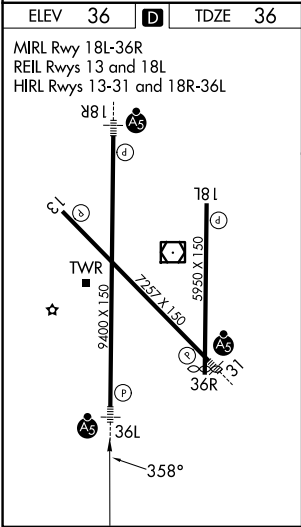
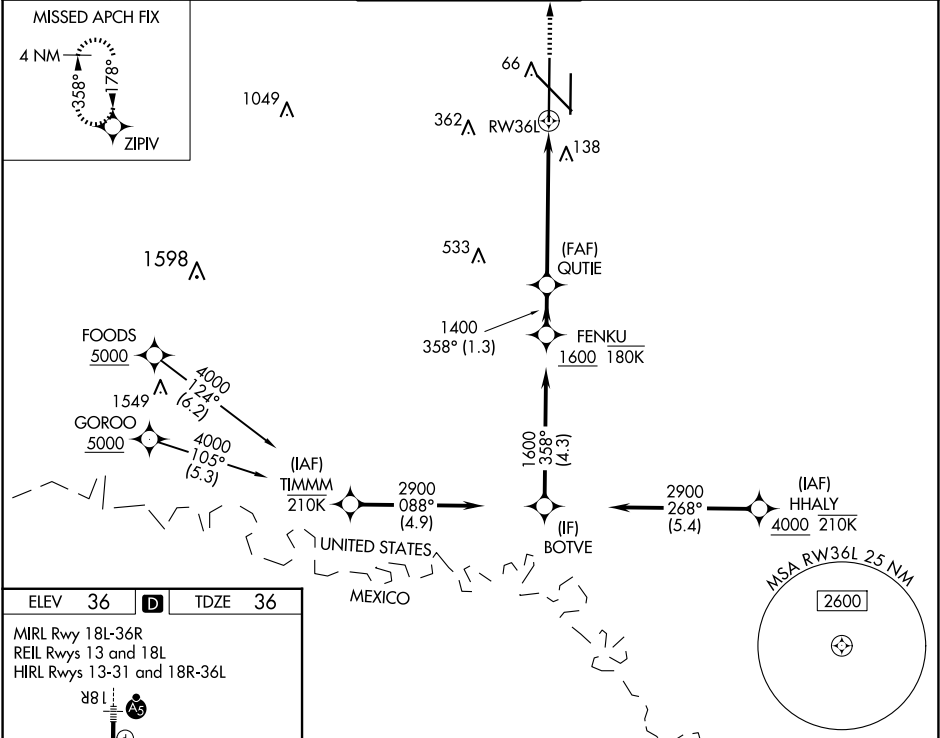


WAAS CH 86530 W36B	APP CRS 358°	Rwy Ldg TDZE 36 Apt Elev 36
--	------------------------	---

RNAV (GPS) Y RWY 36L

VALLEY INTL (HRL)

RNP APCH - GPS.				MALSR 	MISSED APPROACH: Climb to 2000 direct ZIPV and hold.
<div><div><div><div>T</div><div>A</div></div><div>For uncompensated Baro-VNAV systems, LNAV/VNAV NA below -1°C or above 54°C. Baro-VNAV and VDP NA when using Port Isabel altimeter setting. When local altimeter setting not received, use Port Isabel altimeter setting and increase LPV DA to 278 feet; increase LNAV/VNAV DA to 447 feet and all visibilities ½ SM. Increase all MDAs 60 feet, and LNAV visibility Cat C and D ¼ SM; and Circling visibility Cats C and D ¼ SM.</div></div></div>					
ATIS 124.85	VALLEY APP CON 120.7 279.5	HARLINGEN TOWER ★ 119.3(CTAF)  317.6	GND CON 121.7	UNICOM 122.95	



SC-3, 10 JUL 2025 to 07 AUG 2025

SC-3, 10 JUL 2025 to 07 AUG 2025