

WAAS CH 82530 W31A	APP CRS 313°	Rwy Ldg 7257 TDZE 36 Apt Elev 36
--	------------------------	---

RNAV (GPS) Y RWY 31

VALLEY INTL (HRL)

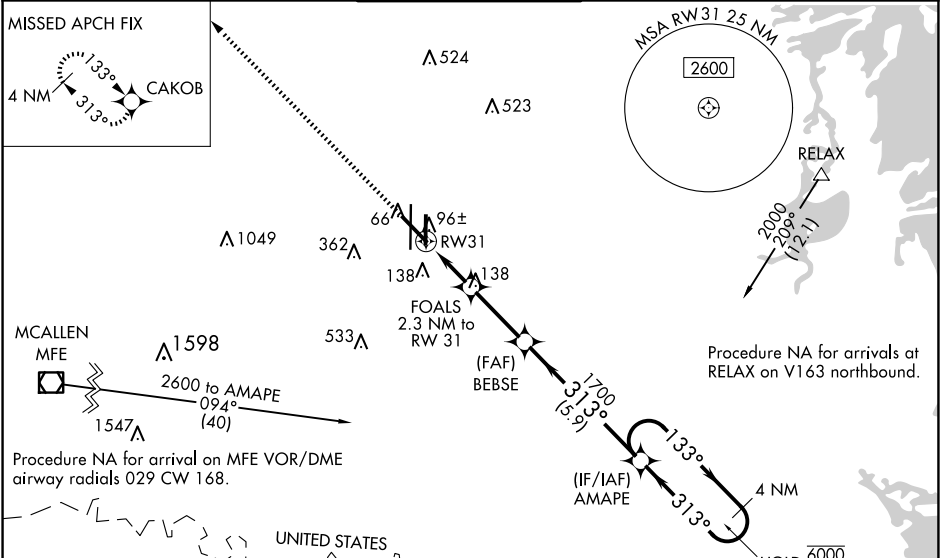
RNP APCH - GPS

▼ For uncompensated Baro-VNAV systems, LNAV/VNAV NA below -1°C or above 54°C.
▲ Baro-VNAV and VDP NA when using Port Isabel altimeter setting. For inop ALS, increase LNAV/VNAV all Cats visibilities to ¾ SM. For inop ALS when using Port Isabel altimeter setting, increase LNAV/VNAV all Cats visibilities to 7⁄8 SM. When local altimeter setting not received, use Port Isabel altimeter setting; increase LPV DA to 278 feet; increase LNAV/VNAV DA to 328 feet; increase all MDAs 60 feet and LNAV visibility Cats C and D ½ SM and Circling visibility Cat C and D ¼ SM.

MALSR

MISSED APPROACH:
Climb to 2000 direct
CAKOB and hold.

ATIS 124.85	VALLEY APP CON 120.7 279.5	HARLINGEN TOWER ★ 119.3 (CTAF) 317.6	GND CON 121.7	UNICOM 122.95
-----------------------	--------------------------------------	---	-------------------------	-------------------------



ELEV 36

D

TDZE 36

181

AS

4

181

150

150

7257

150

36R

36L

313°

MIRL Rwy 18L-36R

REIL Rwys 13 and 18L

HIRL Rwys 13-31 and 18R-36L

2000

CAKOB

FOALS

2.3 NM to RW31

BEBSE

1700

133°

313°

4 NM Holding Pattern

6000

2000

GP 3.00°

TCH 55

0.8 NM

1.5 NM

2.8 NM

5.9 NM

CATEGORY	A	B	C	D
LPV DA	236-½ 200 (200-½)			
LNAV/VNAV DA	286-½ 250 (300-½)			
LNAV MDA	360-½ 324 (400-½)			
CIRCLING	460-1 424 (500-1)	560-1 524 (600-1)	600-1½ 564 (600-1½)	680-2 644 (700-2)