

WAAS CH <b>50131</b> <b>W18A</b>	APP CRS <b>178°</b>	Rwy Ldg <b>9400</b> TDZE <b>35</b> Apt Elev <b>36</b>
--	------------------------	---

RNAV (GPS) Y RWY 18R  
VALLEY INTL (HRL)

RNP APCH - GPS.

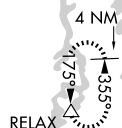
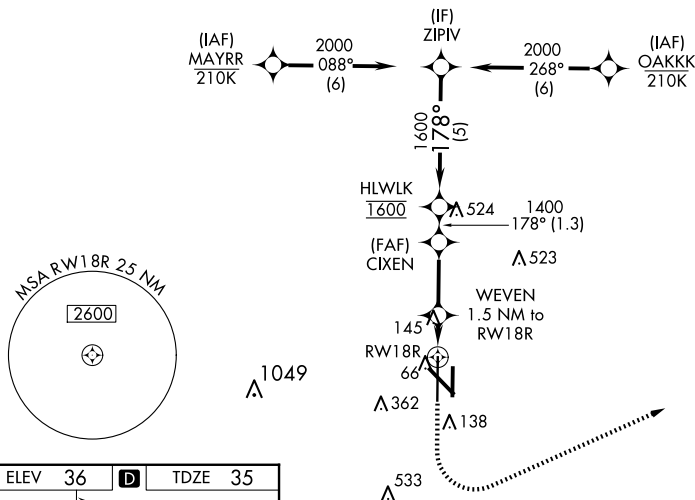
**⚠** For uncompensated Baro-VNAV systems, LNAV/VNAV NA below -1°C or above 54°C. For inop ALS, increase LNAV/VNAV all Cats visibility to RVR 4000, LNAV Cats C and D visibility to RVR 5500. When local altimeter setting not received, use Port Isabel altimeter setting and increase LPV DA to 277 feet; increase LNAV/VNAV DA to 327 feet; increase all MDAs 60 feet and LNAV visibility Cat C/D to RVR 4000 and Circling visibility Cat C/D ¼ SM. For inop ALS when using Port Isabel altimeter setting, increase LNAV/VNAV all Cats visibility to RVR 4500. Baro-VNAV and VDP NA when using Port Isabel altimeter setting. \* RVR 1800 authorized with use of FD or AP or HUD to DA, (NA when using Port Isabel altimeter setting).

MALSR

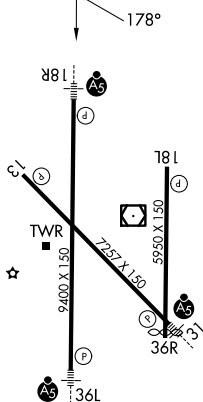


**MISSED APPROACH:**  
Climb to 500 then  
climbing left turn to  
2000 direct RELAX  
and hold

ATIS 124.85	VALLEY APP CON 120.7 279.5	HARLINGEN TOWER★ 119.3 (CTAF) 0 317.6	GND CON 121.7	UNICOM 122.95
----------------	-------------------------------	--	------------------	------------------



ELEV 36	<b>D</b>	TDZE 35
---------	----------	---------



MIRL Rwy 18L-36R  
REIL Rwy 13 and 18L  
HIRL Rwy 13-31 and 18R-36L

HARLINGEN, TEXAS

Amdt 3 11JUL24

500  
↑

1000  
↷

RELAX  
△

VGSi and RNAV glidepath not coincident  
(VGSi Angle 3.00/TCH 71)

HLWLK

See planview for multiple  
IF locations.

WEVEN  
1.5 NM to  
RW18R

CIXEN  
1400

178°

1600

0.9 NM to  
RW18R

RW18R

560

0.9 NM

0.6 NM

2.6 NM

1.3 NM

GP 3.00°  
TCH 55°

CATEGORY	A	B	C	D
LPV DA *	235/24		200 (200-½)	
LNNAV/DA	285/24		250 (300-½)	
LNNAV MDA	400/24	365 (400-½)	400/35	365 (400-½)
<b>C</b> CIRCLING	460-1 424 (500-1)	560-1 524 (600-1)	600-1½ 564 (600-½)	680-2 644 (700-2)

VALLEY INTL (HRL)

26°14'N-97°39'W

RNAV (GPS) Y RWY 18R