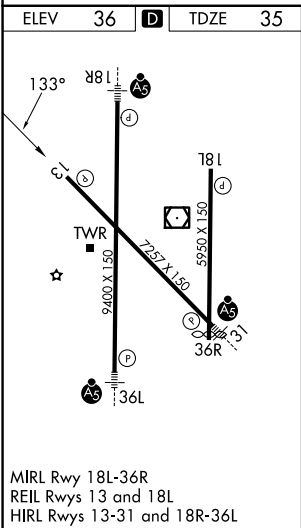
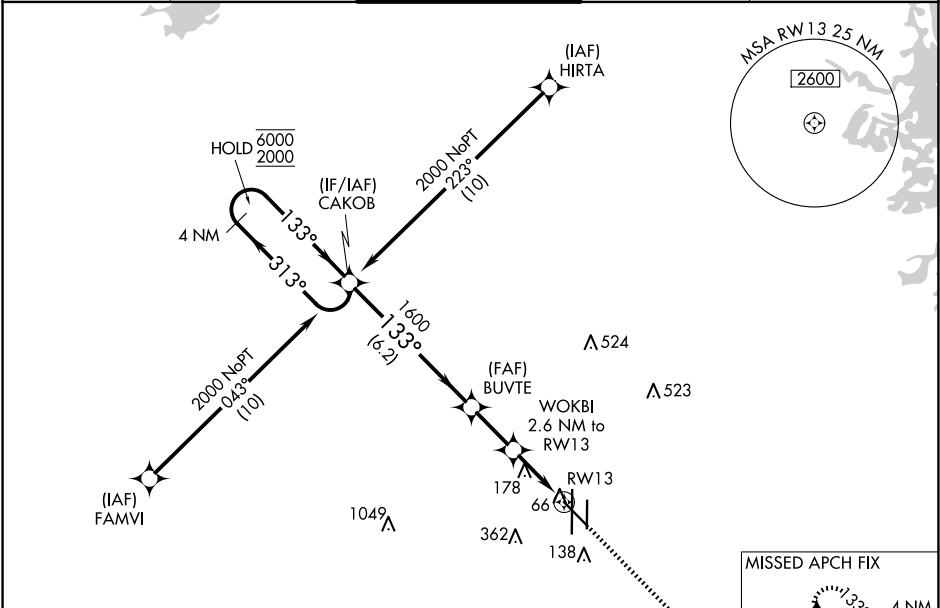


RNP APCH - GPS.

Baro-VNAV and VDP NA when using Port Isabel altimeter setting. For uncompensated Baro-VNAV systems, LNAV/VNAV NA below -1°C or above 54°C. When local altimeter setting not received, use Port Isabel altimeter setting: increase LPV DA to 327 feet and all visibilities ½ SM; increase LNAV/VNAV DA to 327 feet and all visibilities ½ SM; increase all MDAs 60 feet and visibility Cats C and D ¼ SM.

MISSED APPROACH: Climb to 2000 direct AMAPE and hold.

ATIS 124.85	VALLEY APP CON 120.7 279.5	HARLINGEN TOWER ★ 119.3 (CTAF) 0 317.6	GND CON 121.7	UNICOM 122.95
----------------	-------------------------------	---	------------------	------------------



Λ1393		533Λ			
-------	--	------	--	--	--