

APP CRS
313°

Rwy Ldg
TDZE
36

7257
Apt Elev
36

RNAV (RNP) Z RWY 31
VALLEY INTL (HRL)

RNP AR APCH - GPS.

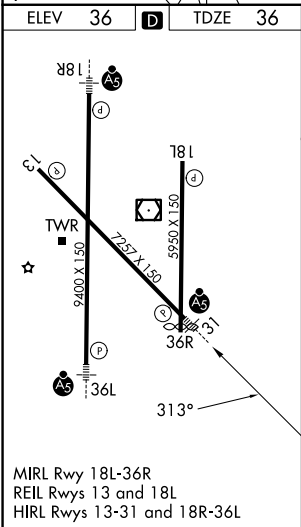
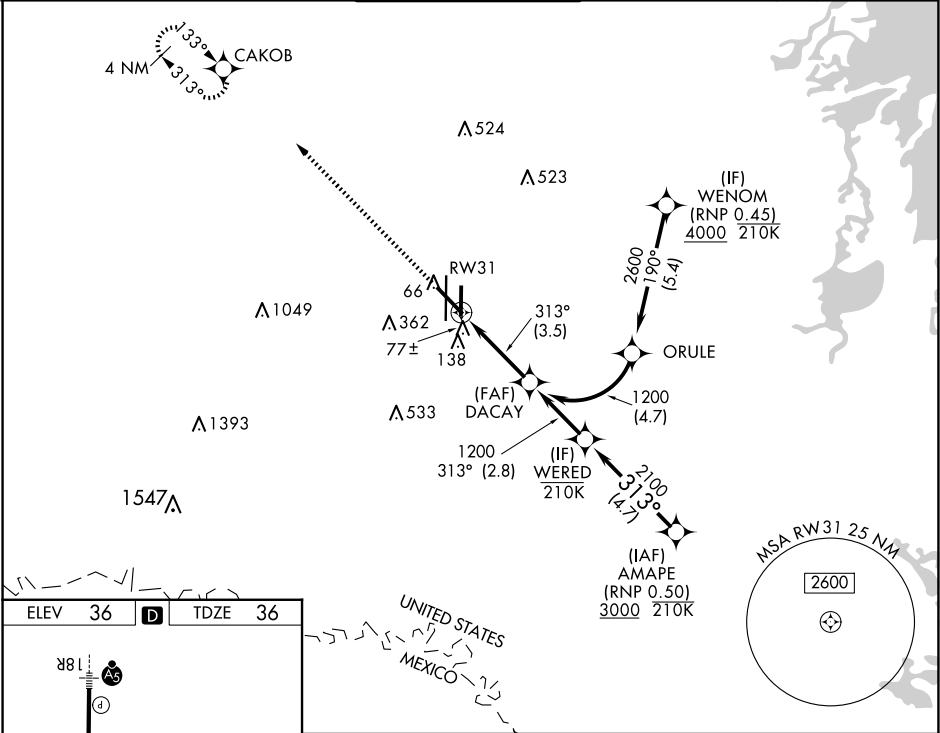
▼

For uncompensated Baro-VNAV systems, procedure NA below -1°C or above 54°C. For inop ALS, increase RNP 0.11 all Cats visibilities to ¾ SM and increase RNP 0.30 all Cats visibilities ⅔ SM. When local altimeter setting not received, procedure NA.

MALSR
A5

MISSED APPROACH:
Climb to 2000 direct
CAKOB and hold.

ATIS 124.85	VALLEY APP CON 120.7 279.5	HARLINGEN TOWER ★ 119.3(CTAF) 317.6	GND CON 121.7	UNICOM 122.95
-----------------------	--------------------------------------	---	-------------------------	-------------------------



2000 CAKOB

See Planview for multiple IF locations.

DACAY 1200

1200

GP 3.00°
TCH 55

CATEGORY	A	B	C	D
RNP 0.11 DA		286-½	250 (300-½)	
RNP 0.30 DA		339-½	303 (400-½)	

AUTHORIZATION REQUIRED