

APP CRS 178°	Rwy Ldg TDZE Apt Elev	9400 35 36
------------------------	-----------------------------	---------------------------------------

RNAV (RNP) Z RWY 18R
VALLEY INTL (HRL)

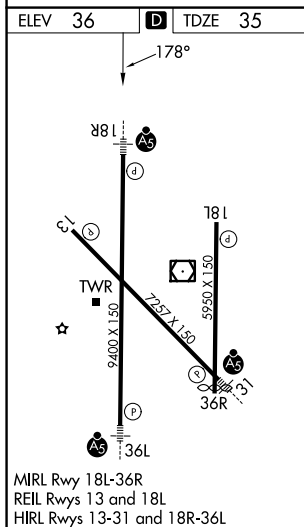
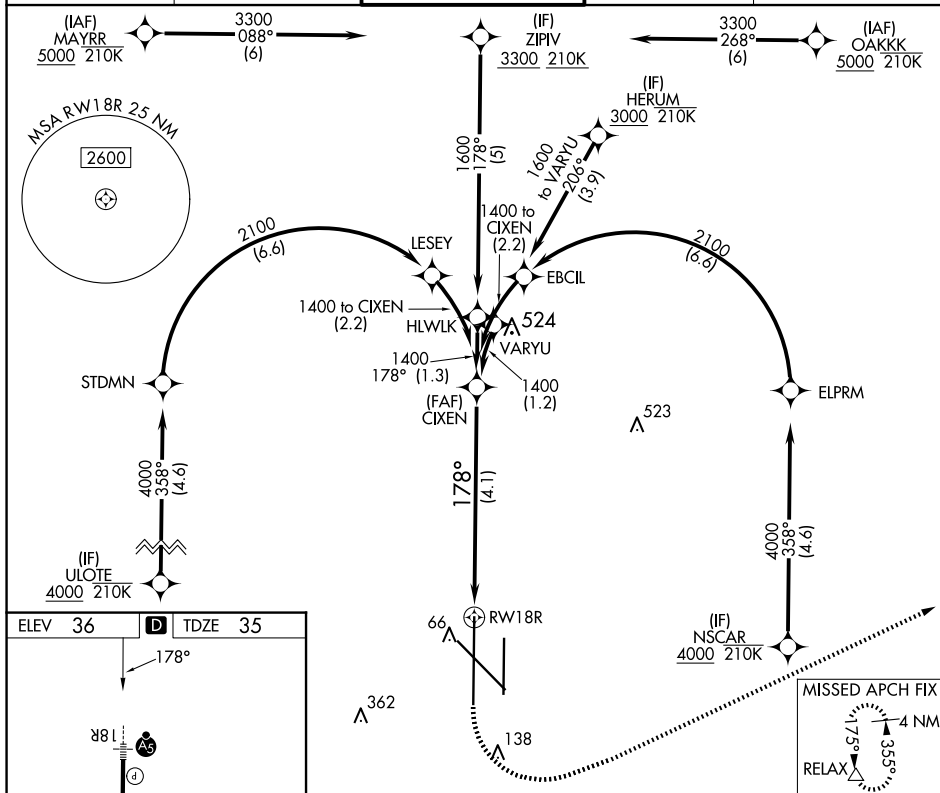
RNP AR APCH - GPS.

T For uncompensated Baro-VNAV systems, procedure NA below -1°C or above 54°C. When local altimeter setting not received, procedure NA. For inop ALS, increase RNP 0.11 all Cats visibility to RVR 4000 and RNP 0.30 all Cats visibility to RVR 4500.

MALSR
A5

MISSED APPROACH: Climb to 500 then climbing left turn to 2000 direct RELAX and hold.

ATIS 124.85	VALLEY APP CON 120.7 279.5	HARLINGEN TOWER★ 119.3(CTAF) 0 317.6	GND CON 121.7	UNICOM 122.95
-----------------------	--------------------------------------	--	-------------------------	-------------------------



CATEGORY	A	B	C	D
RNP 0.11 DA		285/24	250 (300-½)	
RNP 0.30 DA		345/24	310 (400-½)	

AUTHORIZATION REQUIRED

RNAV (RNP) Z RWY 18R