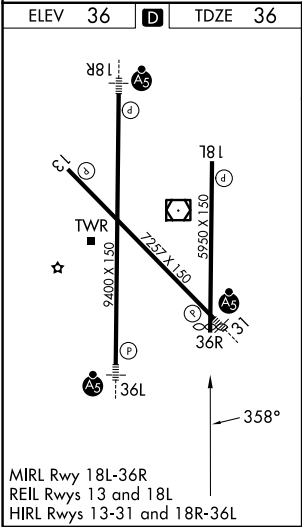
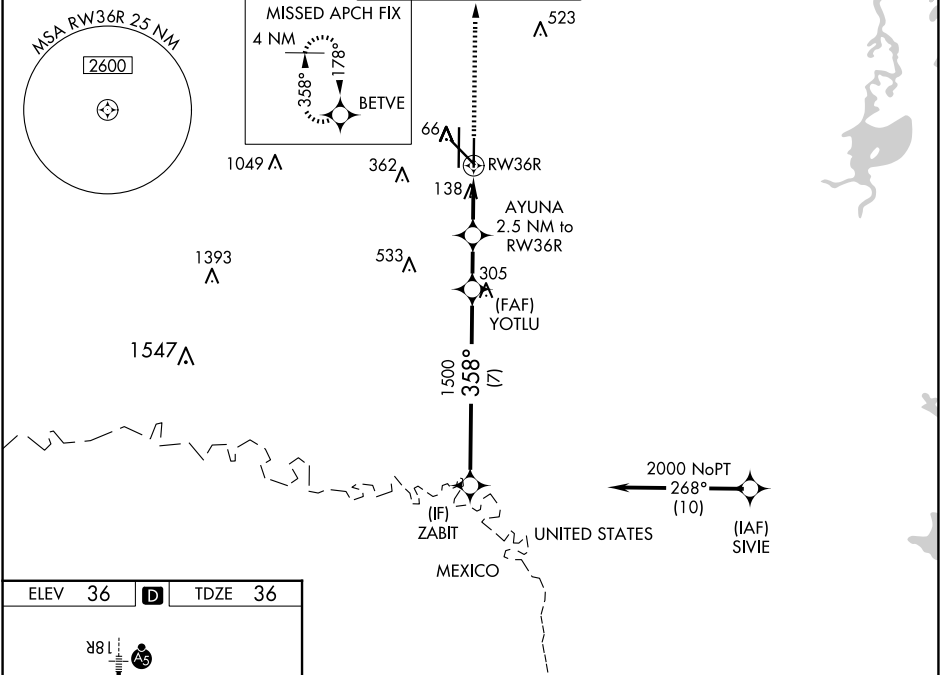


WAAS CH <b>72830</b> <b>W36A</b>	APP CRS <b>358°</b>	Rwy Ldg TDZE Apt Elev	<b>5759</b> <b>36</b> <b>36</b>
--	------------------------	-----------------------------	---------------------------------------

RNAV (GPS) RWY 36R

VALLEY INTL (HRL)

RNP APCH - GPS.				MISSED APPROACH: Climb to 2000 direct BETVE and hold.
<div><div><div></div><div></div></div><div>For uncompensated Baro-VNAV systems, LNAV/VNAV NA below -1°C or above 54°C. Baro-VNAV and VDP NA when using Port Isabel altimeter setting. When local altimeter setting not received, use Port Isabel altimeter setting: increase LPV DA to 278 feet; increase LNAV/VNAV DA to 328 feet and all visibilities ½ SM, increase all MDAs 60 feet and LNAV visibility Cat C and D ¼ SM, and Circling visibility Cats C and D ¼ SM.</div></div>				
ATIS 124.85	VALLEY APP CON 120.7 279.5	HARLINGEN TOWER ★ 119.3 (CTAF) 317.6	GND CON 121.7	UNICOM 122.95



2000	BETVE	AYUNA 2.5 NM to RW36R	YOTLU 1500	ZABIT	2000
1 NM	1.5 NM	2 NM	7 NM		
CATEGORY	A	B	C	D	
LPV DA	236-¾	200 (200-¾)			
LNAV/VNAV DA	286-¾	250 (300-¾)			
LNAV MDA	400-1	364 (400-1)			
CIRCLING	460-1 424 (500-1)	560-1 524 (600-1)	600-1½ 564 (600-1½)	680-2 644 (700-2)	