

WAAS CH 90430 W18B	APP CRS 178°	Rwy Ldg 5949 TDZE 34 Apt Elev 36
--	------------------------	---

RNAV (GPS) RWY 18L
VALLEY INTL (HRL)

RNP APCH - GPS.

T Baro-VNAV and VDP NA when using Port Isabel altimeter setting. For uncompensated Baro-VNAV systems, LNAV/VNAV NA below -1°C or above 54°C. When local altimeter setting not received, use Port Isabel altimeter setting: increase LPV DA to 276 feet; increase LNAV/VNAV DA to 326 feet and all visibilities $\frac{1}{8}$ SM; increase all MDAs 60 feet and LNAV visibility Cats C and D $\frac{1}{8}$ SM, and Circling visibility Cat C and D $\frac{1}{4}$ SM.

MISSED APPROACH:
Climb to 500 then
climbing left turn to
2000 direct RELAX
and hold.

ATIS 124.85	VALLEY APP CON 120.7 279.5	HARLINGEN TOWER ★ 119.3(CTAF) 0 317.6	GND CON 121.7	UNICOM 122.95
----------------	-------------------------------	--	------------------	------------------

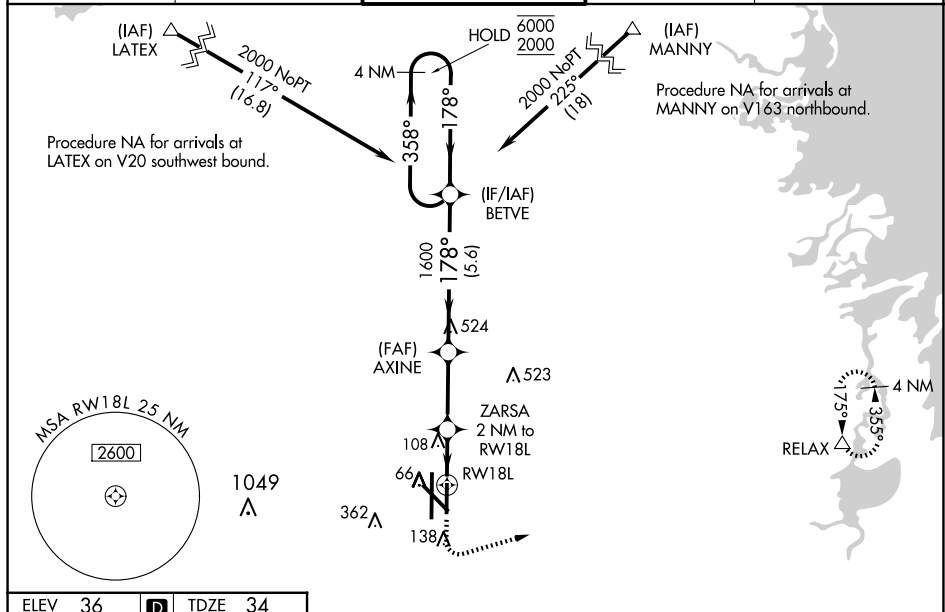



Diagram illustrating the MIRMIL 18L-36R holding pattern and associated navigation aids. The pattern includes a 4 NM holding pattern for RW18L, a 178° turn, and a 1600 ft altitude. Key distances and altitudes are marked: 0.9 NM to RW18L, 0.9 NM to RW36R, 2.8 NM, 5.6 NM, 1.1, 1.600, 3.58°, 178°, 6000, 2000, GP 3.00°, TCH 50. The diagram also shows the MIRMIL 18L-36R, REIL Rwy 13 and 18L, HIRL Rwy 13-31 and 18R-36L, TWR 9400 X 150, 36L, 36R, 18L, 18R, 178°, 1600, 720, 5.6 NM, 2.8 NM, 1.1, 0.9, 1600, 358°, 178°, 6000, 2000, GP 3.00°, TCH 50.

CATEGORY		A	B	C	D
LPV	DA	234- ³ / ₄ 200 (200- ³ / ₄)			
LNAV/ VNAV	DA	284- ³ / ₄ 250 (300- ³ / ₄)			
LNAV	MDA	360-1 326 (400-1)			
 CIRCLING		460-1 424 (500-1)	560-1 524 (600-1)	600-1½ 564 (600-1½)	680-2 644 (700-2)