

LOC/DME I-RVZ

111.5

Chan 52

APP CRS

358°

Rwy Ldg

9400

TDZE

36

Apt Elev

36

ILS RWY 36L (SA CAT I & II)

VALLEY INTL (HRL)

RNP APCH-GPS.

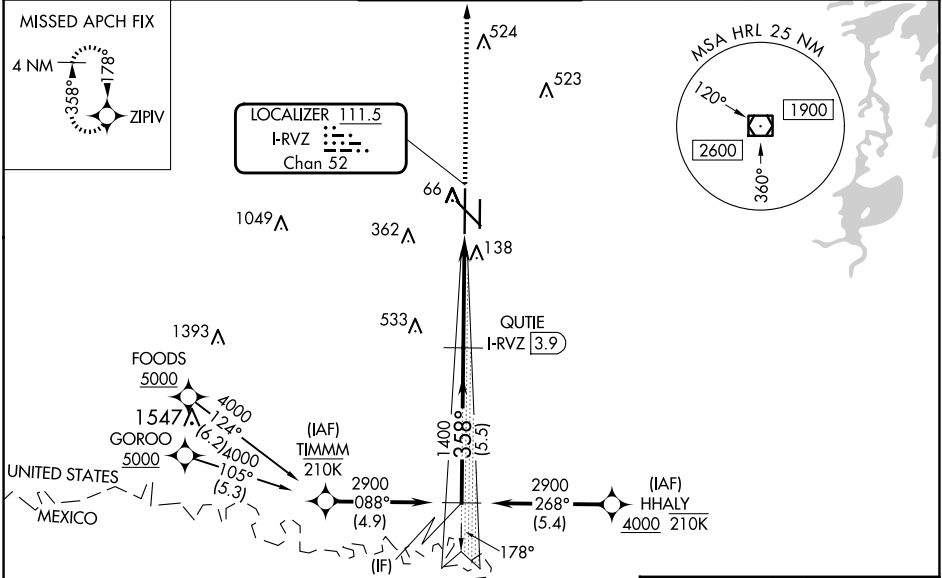
DME required.

SA CAT I/II: Requires specific OPSPEC, MSPEC, or LOA approval.

MALSR

MISSED APPROACH: Climb to 2000 direct ZPIV and hold.

ATIS 124.85	VALLEY APP CON 120.7 279.5	HARLINGEN TOWER ★ 119.3 (CTAF) 317.6	GND CON 121.7	UNICOM 122.95
----------------	-------------------------------	---	------------------	------------------



VGSI and ILS glidepath not coincident (VGSI Angle 3.00/TCH 74).

2000

ZPIV

BOTVE I-RVZ 9.5

QUTIE I-RVZ 3.9

2900

358°

1400

GS 3.00°

TCH 55

5.5 NM

4.1 NM

1039'

ELEV 36

TDZE 36

181

781

7257 X 150

5950 X 150

36L

36R

TWR

9400 X 150

CATEGORY	A	B	C	D
S-ILS 36L	SA CAT I	RA 150/14	150	DA 186
S-ILS 36L	SA CAT II	RA 100/12	100	DA 136

SA CATEGORY I & II ILS - SPECIAL AIRCREW & AIRCRAFT CERTIFICATION REQUIRED

MIRL Rwy 18L-36R
REIL Rwys 13 and 18L
HIRL Rwys 13-31 and 18R-36L