

WAAS CH 82008 W28A	APP CRS 280°	Rwy Idg 8003 TDZE 196 Apt Elev 201
--	------------------------	---

RNAV (GPS) RWY 28

LAKE CITY GATEWAY (LCQ)

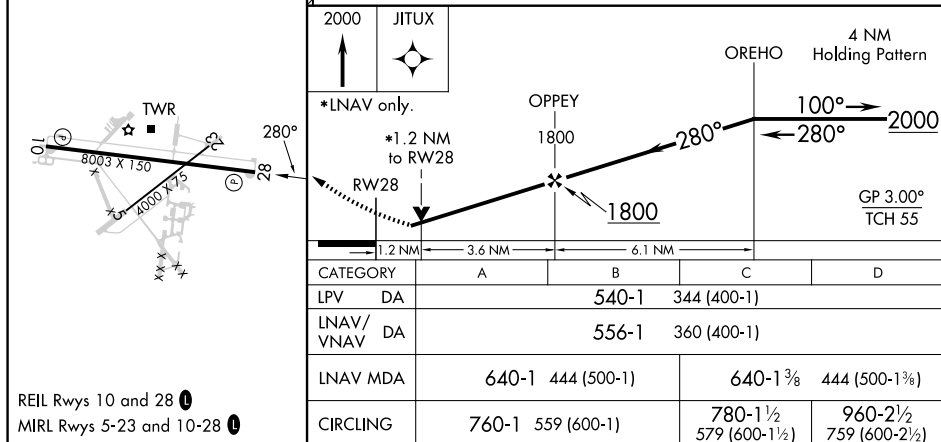
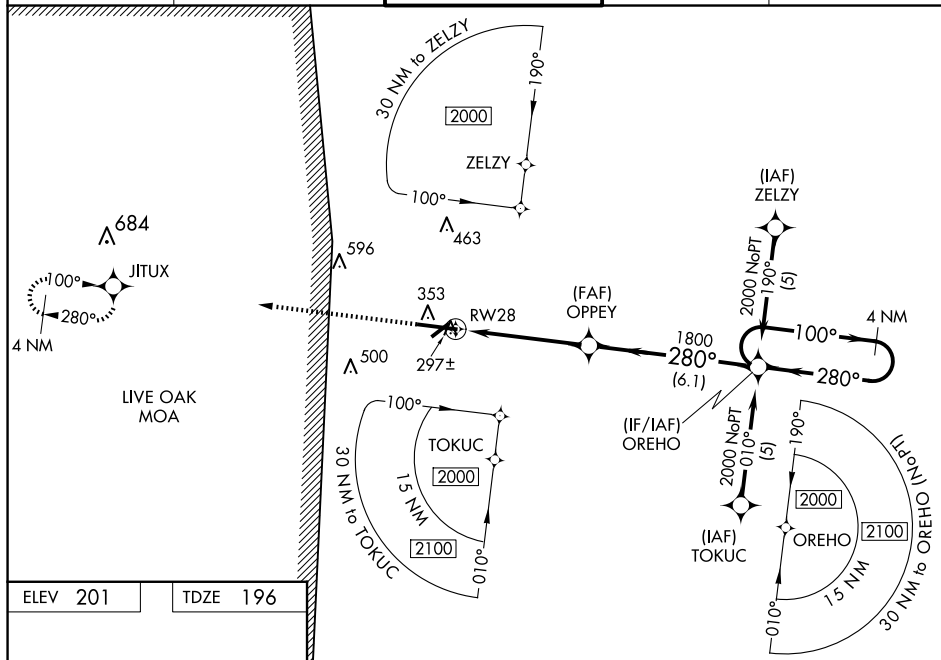
RNP APCH-GPS.

▼ Baro-VNAV and VDP NA when using Gainesville altimeter setting. For uncompensated Baro-VNAV systems, LNAV/VNAV NA below -18°C or above 54°C. When local altimeter setting not received, use Gainesville altimeter setting: Increase LPV DA to 624 feet and all visibility ¼ SM; LNAV/VNAV DA to 640 feet and all visibility ⅓ SM; increase all MDAs 100 feet and LNAV visibility Cat C and D ¼ SM and Circling visibility Cat C ½ SM and Circling Cat D ¼ SM. Circling Rwy 10 NA at night.

▲ Rwy 13 helicopter visibility reduction below ⅓ SM NA.

MISSED APPROACH:
Climb to 2000 direct
JTUX and hold.

AWOS-3 120.675	JACKSONVILLE CENTER 125.375 254.325	LAKE CITY TOWER ★ 119.2 (CTAF) 0 314.6	GND CON 121.9	UNICOM 122.95
-------------------	--	---	------------------	------------------



LAKE CITY, FLORIDA
Amdt 1C 15JUL21

30°11'N-82°35'W

LAKE CITY GATEWAY (LCQ)
RNAV (GPS) RWY 28

SE-3, 10 JUL 2025 to 07 AUG 2025